



**In Sun
Properties Spain**
since 1999

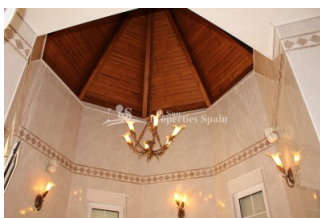
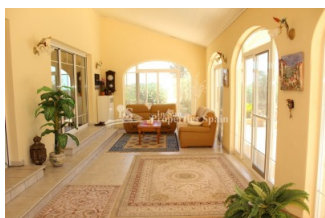
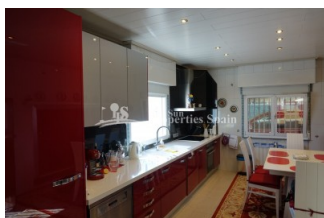
REF: # 4445

ALICANTE



INFO

PRICE:	675.000 €
PROPERTY TYPE:	Villa
LOCATION:	Alicante
BEDROOMS:	7
BATHROOMS:	4
BUILD:	679 (m2)
PLOT:	3.039 (m2)
TERRACE:	-
YEAR:	-
FLOOR:	-
OLD PRICE	-



DESCRIPTION

CREVILLENTE/ELCHE. A unique property for sale - TWO DETACHED VILLAS PLUS OFFICES in a residential area of Crevillente/Elche offering in total 7 bedrooms and 3.5 bathrooms on a landscaped plot of 3039m2 just 10mins drive to the centre of Elche. VILLA 1 has 4 bedrooms 1 bathroom, lounge, kitchen and conservatory, VILLA 2 has 3 bedrooms 2 .5 bathrooms, large lounge, kitchen and conservatory. Furthermore, there are two separate buildings currently used as offices that could easily be used as additional living accommodation or space to run a business. Both properties are in superb condition and built to a very high standard with quality furnishings - sold part furnished. The garden is fully fenced and landscaped with an 8 x 5m private swimming pool. The plot has mature plants including more than 15 olive trees and 30+ palm trees. Crevillente is a small town set inland in the province of Alicante in Spain. It is very dry around Crevillente and the vegetation surrounding the town consists mainly of carob trees, almond trees, olive trees and esparto. Crevillente can easily be accessed from the A7 Autovia del Mediterraneo and then from the national road the N340. The nearest town and city to Crevillente is Elche while a little further away are the cities of Alicante and Santa Pola. The nearest beach to Crevillente is the Arenales del Sol which is located south of Alicante and the Carabassi Beach in nearby Gran Alacant is also worth a visit. Further down south are the great tourist resorts of Guardamar del Segura and Torrevieja with their beaches, promenades, bars, restaurants and some nightlife.

STYLE <ul style="list-style-type: none"> • Mediterranean 	DISTANCE TO : <div>Beach : +10 Km</div> <div>Airport: 20 Km</div> <div>Town center : 3 Km</div>	ORIENTATION <div>South East West</div>	FURNITURE <ul style="list-style-type: none"> • Furnished
PARKING <div>Garage no Cars : 3</div> <div>Parking no Cars: 5</div>	TAX <div>I.B.I : 250 €</div>	FLOORING <ul style="list-style-type: none"> • Stone floors 	KITCHEN <ul style="list-style-type: none"> • Closed kitchen • Equipped kitchen
GARDEN AND TERRACES <ul style="list-style-type: none"> • Covered terrace • Open terrace • Fruit trees • Palm trees • Landscaped • Fenced • BBQ/grill • Private garden 	HEATING <ul style="list-style-type: none"> • Central gas heating • Fireplace wood 	EXTRA <ul style="list-style-type: none"> • Built in wardrobes • Alarm • Satellite TV • Video security • Laundry room • Internet 	

"Experience our experience - Because you deserve the best"