



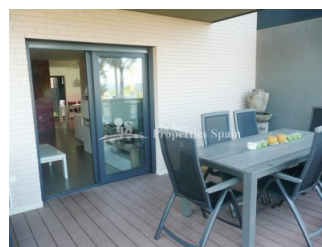
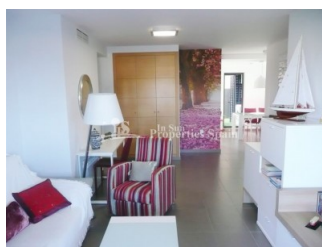
REF: # 4447

ORIHUELA COSTA (MIL PALMERAS)



#### INFO

<b>PRICE:</b>	179.000 €
<b>PROPERTY TYPE:</b>	Apartment
<b>LOCATION:</b>	Orihuela Costa (Mil Palmeras)
<b>BEDROOMS:</b>	3
<b>BATHROOMS:</b>	2
<b>BUILD:</b>	73 (m2)
<b>PLOT:</b>	-
<b>TERRACE:</b>	19 (m2)
<b>YEAR:</b>	
<b>FLOOR:</b>	-
<b>OLD PRICE</b>	-



#### DESCRIPTION

Completion July 2019 of this NEW development 'Residential GARDA', located in MIL PALMERAS just 700M to the sea! Set around lovely communal swimming pools (one for children, one for adults), beautiful extensive gardens, Children's playground and underground parking. There are 6 blocks of Apartments and Bungalows. BUNGALOWS of 56m2, with 10m2 terrace, 2 bedrooms, 2 bathrooms start at €16500. Ground floor have private garden and top floor have private solarium with 2 bedrooms and 2 bathrooms. All have an equipped kitchen with vitro ceramic hob, oven and extractor fan. They also have a laundry area and a pre-installation for air conditioning. Mil Palmeras (meaning 'a thousand palms') is a small coastal resort on the N332 and near the AP7, is located between Dehesa de Campoamor and Torre de la Horadada .It is a quiet coastal town which really comes to life in the summer months. Within a short driving distance there are four prestigious golf courses, Royal Campoamor golf club, Las Ramblas de Orihuela golf club, Villamartin golf club and the fabulous new Los Colinas golf club. 45 minutes from Alicante International Airport.

<b>STYLE</b> <ul style="list-style-type: none"><li>• Modern</li><li>• Contemporary</li></ul>	<b>VIEWS</b> <ul style="list-style-type: none"><li>• Panoramic views</li><li>• Sea views</li></ul>	<b>DISTANCE TO :</b> <div>Beach : 1 Km</div> <div>Airport: 40 Km</div> <div>Town center : 1 Km</div>	<b>ORIENTATION</b> <div>South west</div>
<b>PARKING</b> <div>Garage no Cars : 1</div> <div>Parking no Cars: 1</div>	<b>FLOORING</b> <ul style="list-style-type: none"><li>• Tile floors</li><li>• Stone floors</li></ul>	<b>KITCHEN</b> <ul style="list-style-type: none"><li>• Open kitchen</li><li>• Equipped kitchen</li><li>• Granite countertop</li></ul>	<b>GARDEN AND TERRACES</b> <ul style="list-style-type: none"><li>• Palm trees</li><li>• Play Ground</li><li>• Landscaped</li><li>• Stone walls</li><li>• Communal Garden</li></ul>
<b>EXTRA</b> <ul style="list-style-type: none"><li>• Built in wardrobes</li><li>• Reinforced door</li><li>• Double glazed windows</li></ul>			

*"Experience our experience - Because you deserve the best"*