



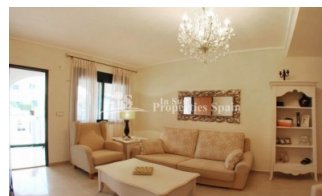
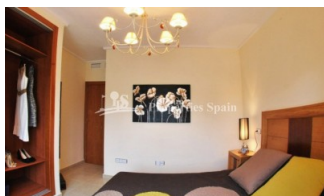
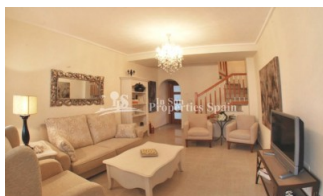
REF: # 4689

QUESADA-ROJALES (DONA PEPA)



INFO

PRICE:	169.900 €
PROPERTY TYPE:	Townhouse
LOCATION:	Quesada-Rojales (Dona Pepa)
BEDROOMS:	2
BATHROOMS:	2
BUILD:	82 (m2)
PLOT:	-
TERRACE:	-
YEAR:	-
FLOOR:	-
OLD PRICE	-



DESCRIPTION

This is a lovely 2 bedroom 82m2 'Fortuna Model' Townhouse with 35m2 garden situated within a completely gated community located in DONA PEPA, close to CIUDAD QUESADA with a main entrance and exit. There are three main swimming pools and two additional pools for children. One of the main pools also has a Jacuzzi and hydro massage jet. There is an ample parking throughout the residential, however there is also a private parking space in the underground car park of the residential. The property is located close to the Playpark and Health centre within Doña Pepa, which is a modern urbanisation belonging to Ciudad Quesada and has all the amenities which include supermarkets, bars, hotel and shops as well as a bank. Ciudad Quesada town centre is a ten minute walk from Doña Pepa. In Ciudad Quesada itself you will find international supermarkets, restaurants, banks, a medical centre as well as a water park. The property is ideally located if you are a golf enthusiast, with La Marquesa Golf Club just a five minute drive away. The nearest beaches are at Guardamar/Campomar and La Mata ten minutes drive away. *Furnishings at an additional cost Nearest Airports: San Javier (Murcia) - Approx 30 minute drive Alicante Airport - Approx 30 minute drive

STYLE <ul style="list-style-type: none"> Mediterranean 	VIEWS <ul style="list-style-type: none"> Panoramic views 	DISTANCE TO : <div>Beach : +10 Km</div> <div>Airport: 40 Km</div> <div>Town center : 1 Km</div>	ORIENTATION <div>South East West</div>
FURNITURE <ul style="list-style-type: none"> Furnished Not furnished 	PARKING <div>Garage no Cars : 1</div> <div>Parking no Cars: 1</div>	FLOORING <ul style="list-style-type: none"> Tile floors Stone floors 	KITCHEN <ul style="list-style-type: none"> Open kitchen Equipped kitchen
GARDEN AND TERRACES <ul style="list-style-type: none"> Covered terrace Open terrace Play Ground Landscaped Private garden Communal Garden 	EXTRA <ul style="list-style-type: none"> Built in wardrobes Reinforced door Double glazed windows 		

"Experience our experience - Because you deserve the best"