



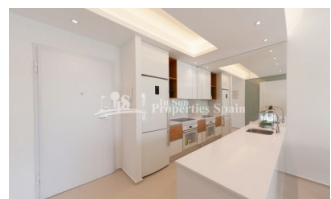
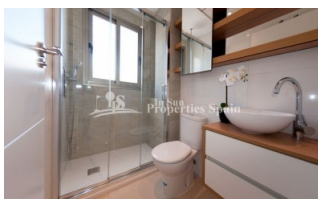
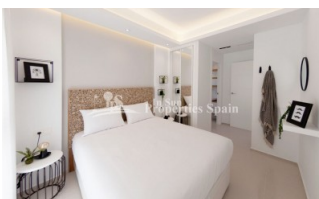
REF: # 5925

QUESADA-ROJALES (DONA PEPA)

Image not found
https://cmsinmo.com/imagenes/uploads/inmu/5/5925/allegra_residenciañ.jpg

INFO

PRICE:	222.000 €
PROPERTY TYPE:	Apartment
LOCATION:	Quesada-Rojales (Dona Pepa)
BEDROOMS:	3
BATHROOMS:	2
BUILD:	96 (m2)
PLOT:	-
TERRACE:	129 (m2)
YEAR:	
FLOOR:	-
OLD PRICE	-



DESCRIPTION

Delivery September 2019. A STUNNING new development in DONA PEPA of 2 and 3 bedroom, 2 bathroom Ground and Top Floor Apartments. Ground floor of minimum 96m² come with private 129m² garden, from €222,000 and First Floor of minimum 96m² come with private 75m² roof solarium, from €248,000. These Apartments are from a well renowned builder with over 40 years experience, offering their same signature in terms of design, quality and finish. A home you will be proud to own! Doña Pepa is an elegant urbanization with wide avenues, wonderful views to the Natural Park and the salt lakes with a wide range of leisure activities and all the necessary amenities without having to take a car. It is only 30 minutes away from international airports, 35 minutes from Alicante and 5 minutes from the most beautiful beaches of the Costa Blanca. It is an area with good annual temperatures and a great atmosphere. The area of Doña Pepa has a widely varied infrastructure offering a multitude of shops, supermarkets, restaurants, cafes, medical centers, pharmacies, golf courses, banks, a 4* Hotel with a Spa, a church, a social center, a cultural center, sports areas, an aquapark, a school, two natural parks, a religious center and high quality shopping complexes.

STYLE <ul style="list-style-type: none"> • Modern • Contemporary 	VIEWS <ul style="list-style-type: none"> • Panoramic views 	AIRCONDITIONING <ul style="list-style-type: none"> • Central airconditioning 	DISTANCE TO : <div>Beach : +10 Km</div> <div>Airport: 30 Km</div> <div>Town center : 1 Km</div>
ORIENTATION <div>South East West</div>	PARKING <div>Parking no Cars: 1</div>	MAIN LIVING AREA <ul style="list-style-type: none"> • Bathroom en-suite 	FLOORING <ul style="list-style-type: none"> • Tile floors • Stone floors
KITCHEN <ul style="list-style-type: none"> • Open kitchen • Equipped kitchen • Granite countertop 	GARDEN AND TERRACES <ul style="list-style-type: none"> • Covered terrace • Open terrace • Landscaped • Private garden • Communal Garden 	EXTRA <ul style="list-style-type: none"> • Built in wardrobes • Reinforced door • Double glazed windows 	

"Experience our experience - Because you deserve the best"