



**In Sun  
Properties Spain**  
since 1999

REF: # 10401



#### INFO

**PRICE:** 190.000 €

**PROPERTY TYPE:** Apartment

**LOCATION:**

**BEDROOMS:** 2

**Bathrooms:** 2

**Build:** 85 (m2)

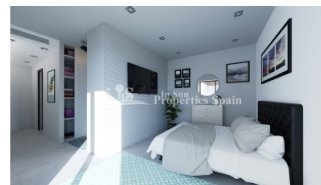
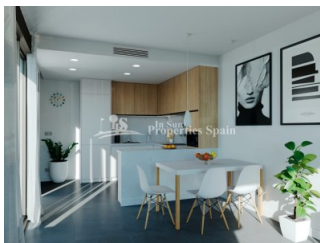
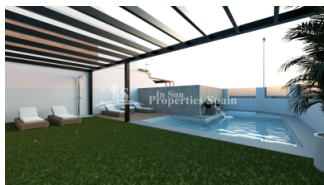
**Plot:** -

**Terrace:** 37 (m2)

**Year:** -

**Floor:** -

**Old price** -



#### DESCRIPTION

NEW BUILD APARTMENT GROUND FLOOR IN PILAR DE LA HORADADA with communal pool, only 5 minutes from the beach. This 85m2 ground floor apartment consists of 2 bedrooms, 2 bathrooms (one of them en suite), kitchen, living room, 37m2 terrace and parking. There is an option of a storeroom at an extra cost. The apartment complex has a lovely communal area which includes a swimming pool and outside shower. There is a fully furnished kitchen that includes furniture in the lower and upper part, refrigerator, oven, induction hob, extractor and a washing machine or dishwasher. It has pre-installation of A / C through ducts, fully finished bathrooms including furniture and under-floor heating. There is also lighting included both indoors and outdoors. This residential complex is located only a few meters from all services and the centre. ? Pilar de la Horadada is a typical Spanish village in the most southern part of the Costa Blanca. The large main street has supermarkets, lots of shops, restaurants and bars and some lovely squares. The beautiful beaches of Torre de la Horadada and Mil Palmeras with fine sand promenade is just 5 minutes away. In Pilar de la Horadada there is also a well-developed cycling and walking path network, and there is also a large offer of various sports activities. Lo Romero 18 hole golf course is just a short drive from town. The Airports of Corvera (Murcia) and Alicante are respectively 40 and 55 minutes away.

<b>STYLE</b>	<b>VIEWS</b>	<b>AIRCONDITIONING</b>	<b>DISTANCE TO :</b>
<ul style="list-style-type: none"><li>• Modern</li></ul>	<ul style="list-style-type: none"><li>• Panoramic views</li></ul>	<ul style="list-style-type: none"><li>• Central airconditioning</li></ul>	Beach : 4 Km Airport: 40 Km
<b>PARKING</b>	<b>MAIN LIVING AREA</b>	<b>KITCHEN</b>	<b>GARDEN AND TERRACES</b>
Parking no Cars: 1	<ul style="list-style-type: none"><li>• Bathroom en-suite</li></ul>	<ul style="list-style-type: none"><li>• Open kitchen</li><li>• Equipped kitchen</li></ul>	<ul style="list-style-type: none"><li>• Open terrace</li></ul>
<b>HEATING</b>	<b>EXTRA</b>		
<ul style="list-style-type: none"><li>• Floor heating bathrooms</li></ul>	<ul style="list-style-type: none"><li>• Reinforced door</li></ul>		













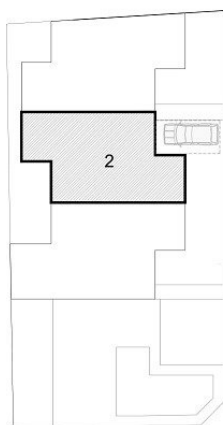






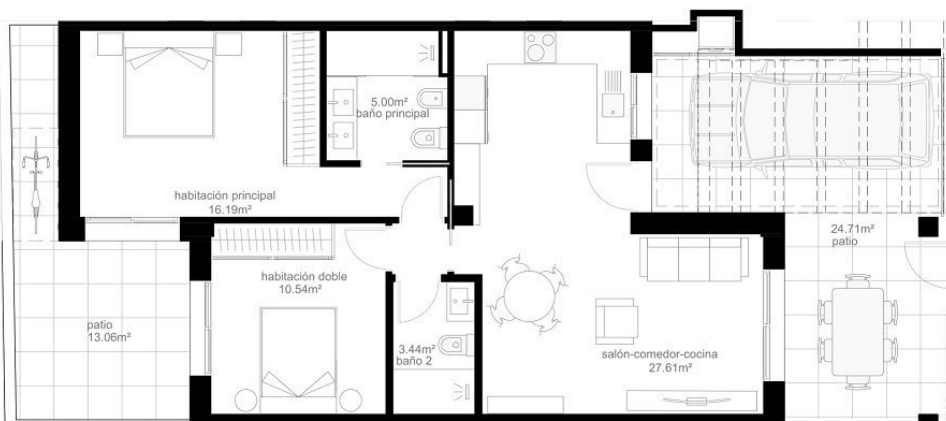


PLANTA GENERAL



SUPERFICIES ÚTILES	
SUPERFICIES ÚTILES VIVIENDA 2	
PLANTA BAJA	
salón-comedor-cocina	27.61m²
distribuidor	0.92m²
baño 2	3.44m²
dormitorio doble	10.54m²
habitación principal	16.19m²
baño principal	5.00m²
Superficie útil PB TOTAL	63.70m²

SUPERFICIES CONSTRUIDAS	
SUPERFICIES CONSTRUIDAS VIVIENDA 2	
PLANTA BAJA	
Superficie construida PB TOTAL	85.42m²



VIVIENDA 2













*"Experience our experience - Because you deserve the best"*