

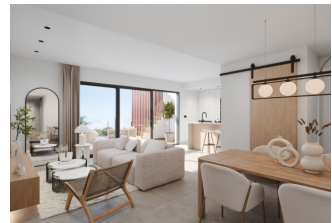
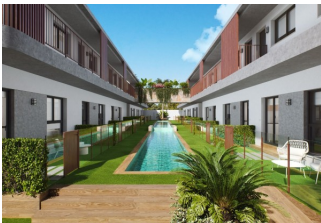


REF: # 10656



#### INFO

<b>PRICE:</b>	195.900 €
<b>PROPERTY TYPE:</b>	Apartment
<b>LOCATION:</b>	
<b>BEDROOMS:</b>	2
<b>Bathrooms:</b>	2
<b>Build:</b>	70 (m2)
<b>Plot:</b>	-
<b>Terrace:</b>	-
<b>Year:</b>	-
<b>Floor:</b>	-
<b>Old price</b>	-



#### DESCRIPTION

**NEW BUILD RESIDENTIAL COMPLEX IN PILAR DE LA HORADADA** New Build beautiful residential of 24 bungalows, designed and conceived to live with maximum comfort in a privileged location surrounded by all kinds of services and only 4km from the sea. These properties consist of 2 or 3 bedrooms, 2 bathrooms, open plan kitchen with the lounge area, fitted wardrobes. This top floor bungalows has a private solarium. All properties has parking space. The residential complex has an excellent communal area with a swimming pool and an outdoor swimming pool. Pilar de la Horadada is a typical Spanish village in the most southern part of the Costa Blanca. The large main street has supermarkets, lots of shops, restaurants and bars and some lovely squares. The beautiful beaches of Torre de la Horadada and Mil Palmeras with fine sand promenade is just 5 minutes away. In Pilar de la Horadada there is also a well-developed cycling and walking path network, and there is also a large offer of various sports activities. Lo Romero 18 hole golf course is just a short drive from town. The airports of Corvera (Murcia) and Alicante are respectively 40 and 55 minutes away.

**VIEWS**

- Panoramic views

**GARDEN AND  
TERRACES**

- Open terrace

**EXTRA**

- Reinforced door























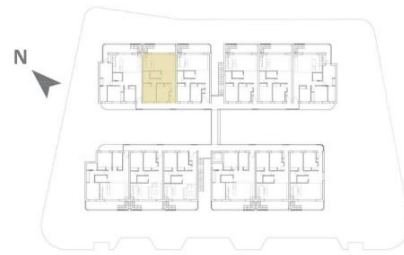




Planta primera / First Floor



Planta solarium / Topfloor



#### VIVIENDA PLANTA PRIMERA - E:

##### SUPERFICIE ÚTIL

Salón - Comedor - Cocina.....	34.08 m <sup>2</sup>
Dormitorio 1 .....	9.69 m <sup>2</sup>
Dormitorio 2 .....	10.46 m <sup>2</sup>
Baño 1 .....	3.25 m <sup>2</sup>
Baño 2 .....	3.08 m <sup>2</sup>

TOTAL SUPERFICIE ÚTIL ..... 60.56 m<sup>2</sup>

Terraza .....	8.81 m <sup>2</sup>
Solárium.....	64.03 m <sup>2</sup>

SUPERFICIE CONSTRUIDA VIVIENDA.....70.04 m<sup>2</sup>

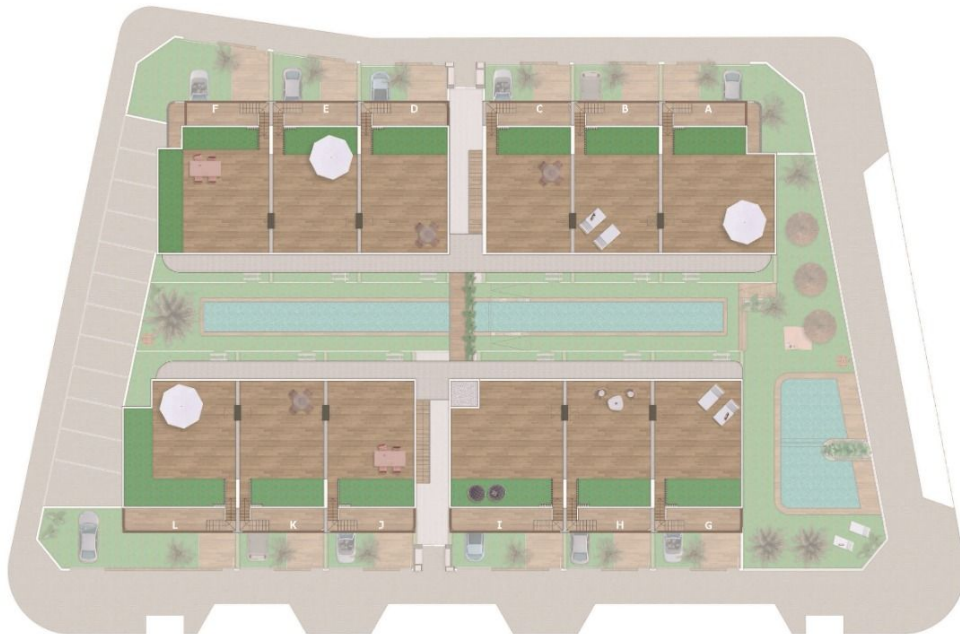


Planta Baja / Ground Floor





Planta Primera / First Floor



Planta Solarium/ Topfloor

*"Experience our experience - Because you deserve the best"*