



REF: # 10892



#### INFO

<b>PRICE:</b>	356.500 €
<b>PROPERTY TYPE:</b>	Villa
<b>LOCATION:</b>	
<b>BEDROOMS:</b>	3
<b>Bathrooms:</b>	2
<b>Build:</b>	108 (m2)
<b>Plot:</b>	87 (m2)
<b>Terrace:</b>	-
<b>Year:</b>	-
<b>Floor:</b>	-
<b>Old price</b>	-



#### DESCRIPTION

**NEW BUILD SEMI-DETACHED VILLA IN TORREVIEJA** New Build residential of 5 beautiful properties with private swimming pools in Torrevieja. Semi-detached villa has 3 bedrooms, 2 bathrooms, open plan kitchen with living room, fitted wardrobes, terrace, private solarium with BBQ area, garden with the pool and comunal parking space. Properties built with top quality materials and finishes. Its incredible location 5 minutes from the sea and its proximity to the main shopping and leisure areas of Torrevieja, as well as its golf courses, make it a unique and exclusive place to live. Torrevieja is a Spanish town in the province of Alicante, on the Costa Blanca. It is known for its typically Mediterranean climate and coastline. It has boardwalks with resorts along its sandy beaches. The small Museum of the Sea and Salt houses exhibitions on the fishing and salt history of the city. In the interior, the Lagunas de La Mata-Torrevieja Natural Park has trails and two salty lagoons, one pink and the other green. Alicante airport located 40 minutes away and Murcia airport about 1 hour away.

**VIEWS**

- Panoramic views

**GARDEN AND  
TERRACES**

- Open terrace
- Private garden

**EXTRA**

- Reinforced door









#### SUPERFICIES ÚTILES

Hall	2,06m <sup>2</sup>
Estar-Comedor-Cocina	25,74m <sup>2</sup>
Paseo Planta Baja	2,87m <sup>2</sup>
Dormitorio 1	9,98m <sup>2</sup>
Baño 1	5,44m <sup>2</sup>
Paseo Planta Primera	1,92m <sup>2</sup>
Dormitorio 2	11,14m <sup>2</sup>
Dormitorio 3	10,12m <sup>2</sup>
Baño 2	4,97m <sup>2</sup>
Torreón	1,24m <sup>2</sup>
Jardín	87,00m <sup>2</sup>
Terraza	15,00m <sup>2</sup>
Solárium	28,28m <sup>2</sup>

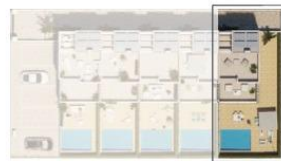
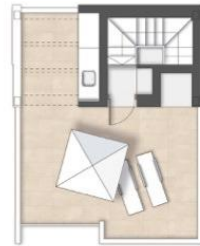
**TOTAL** 75,48m<sup>2</sup>

**TOTAL SUP. TERRAZAS** 108,19m<sup>2</sup>

**TOTAL SUP. CONSTRUIDA** 130,28m<sup>2</sup>

#### CARACTERÍSTICAS

Nº Habitaciones **3**  
 Nº Baños **2**  
 Piscina Independiente: **4,3x3m<sup>2</sup>**  
 Comunidad: **NO**  
 Terraza Planta 1ª: **15m<sup>2</sup>**  
 Solárium: **28,28m<sup>2</sup>**  
 Jardín: **87m<sup>2</sup>**  
 Placas solares: **1,20 KW/Vivienda**



*"Experience our experience - Because you deserve the best"*