



REF: # 11046

()



INFO

PRICE:	729.000 €
PROPERTY TYPE:	Villa
LOCATION:	()
BEDROOMS:	4
Bathrooms:	3
Build:	237 (m2)
Plot:	334 (m2)
Terrace:	-
Year:	-
Floor:	-
Old price	-



DESCRIPTION

MODERN DESIGN VILLA WITH GOLF VIEWS Designer villa in one of the most exclusive locations on the Costa Blanca. With spectacular views over the Finca Golf Resort, this modern house with Mediterranean touches of 4 bedrooms and 3 bathrooms, takes you to a privileged corner where you can enjoy the good climate in its more than 150 square metres and its basement of more than 80m2. It stands out for the use of the best qualities as well as a large garden that allows us to enjoy absolute privacy and a dreamlike private swimming pool that will make every moment an unforgettable memory. Located on the La Finca golf course in Algorfa, 20 minutes from the wonderful beaches of Guardamar.

VIEWS

- Panoramic views

**GARDEN AND
TERRACES**

- Open terrace



















NÚMERO/NUMBER: 2117 a 2126

PLANTA PRIMERA/FIRST FLOOR
SUP. ÚTILES / USEFUL SURFACE

DORMITORIO 2/BEDROOM 2	19.00 M2
BÑO 2/BATH 2	4.30 M2
DORMITORIO 3/BEDROOM 3	9.50 M2
DORMITORIO 4/BEDROOM 4	13.20 M2
BÑO 3/BATH 3	4.20 M2
PASILLO/CORRIDOR	7.20 M2
ESCALERA/STAIRS	6.40 M2
TERRAZA/TERRACE	19.80 M2

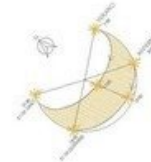
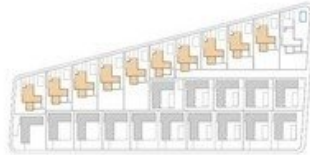
BUILT AREA: 155.70 M2
BASEMENT AREA: 82.90 M2

TERRACE AREA: 59.00 M2
POOL AREA: 32.00 M2

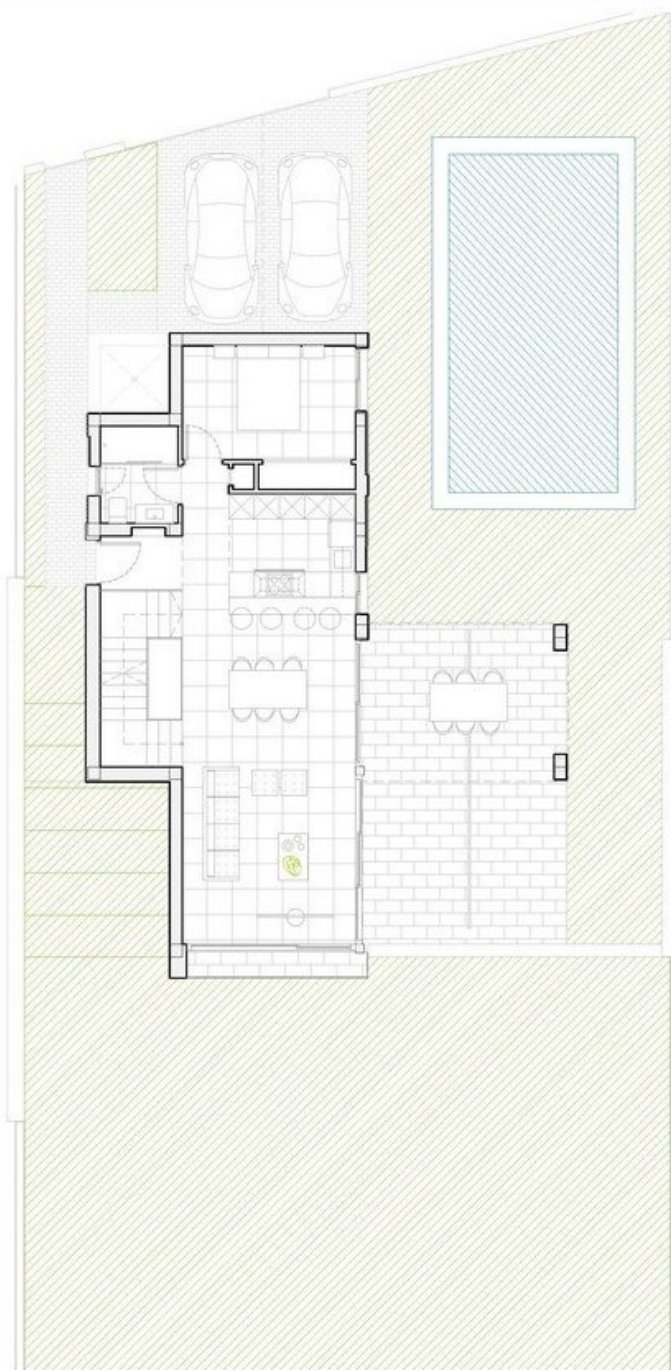
ENTRANCE: 10.00 M2
PARKING: 28.00 M2

BEDROOMS: 4
BATHROOMS: 3

SOLEAMIENTO/SUNCALC



ESCALA / SCALE 1:100 (A3)



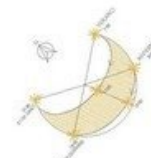
NÚMERO/NUMBER: 2117 a 2126

PLANTA BAJA/GROUND FLOOR
SUP. ÚTILES / USEFUL SURFACE

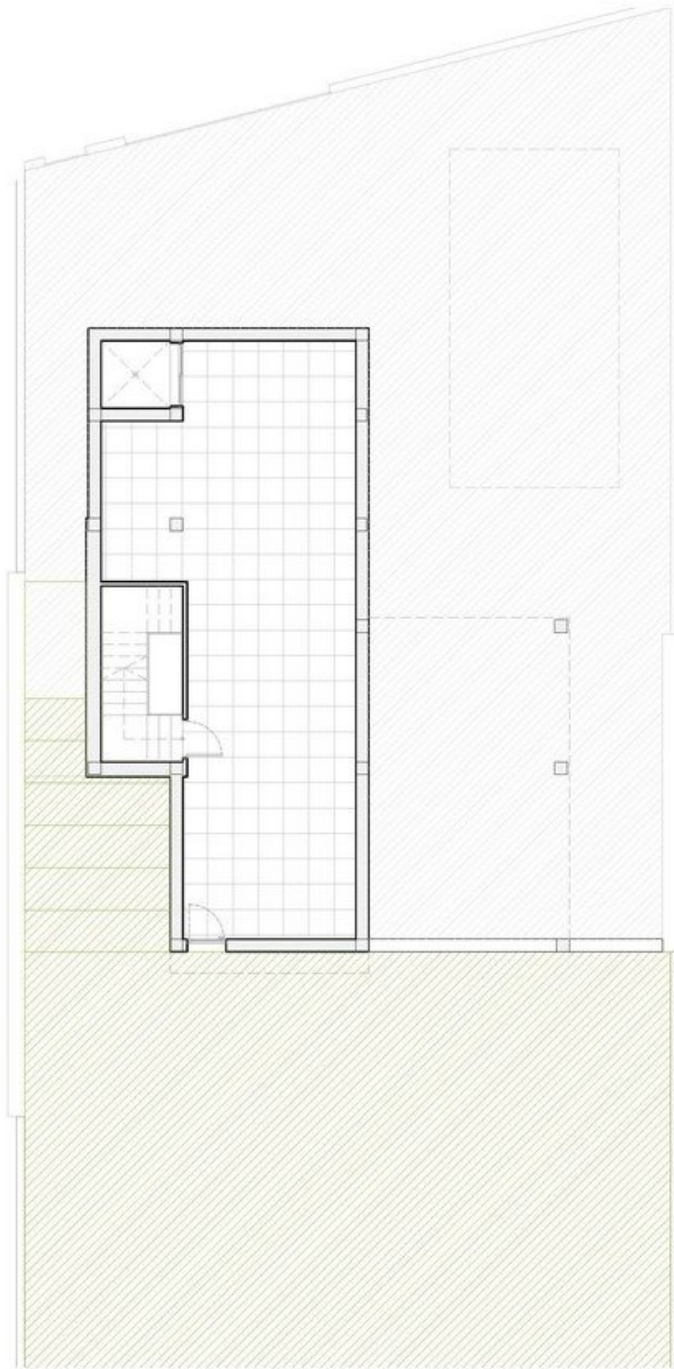
SKC/DRK	43,70 M2
DORMITORIO 1/BEDROOM 1	12,60 M2
BAÑO 1/BATH 1	4,20 M2
PASILLO/CORRIDOR	0,80 M2
ACCESO/HALL	2,50 M2
ESCALERA/STAIRS	6,40 M2
TERRAZA/TERRACE	39,20M2

BUILT AREA: 155,70 M2 TERRACE AREA: 59,00 M2 ENTRANCE: 10,00 M2 BEDROOMS: 4
BASEMENT AREA: 82,90 M2 POOL AREA: 32,00 M2 PARKING: 28,00 M2 BATHROOMS: 3

SOLEAMIENTO/SUNCALC



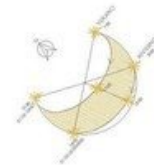
ESCALA / SCALE 1:100 (A3)



NÚMERO/NUMBER: 2117 a 2126

PLANTA SÓTANO/BASEMENT FLOOR
SUP. ÚTILES / USEFUL SURFACE

BUILT AREA: 155,70 M2 TERRACE AREA: 59,00 M2 ENTRANCE: 10,00 M2 BEDROOMS: 4
BASEMENT AREA: 82,90 M2 POOL AREA: 32,00 M2 PARKING: 28,00 M2 BATHROOMS: 3 SOLEAMIENTO / SUNCALC



ESCALA / SCALE 1:100 (A3)

"Experience our experience - Because you deserve the best"