



REF: # 11356

()



INFO

PRICE:	415.500 €
PROPERTY TYPE:	Apartment
LOCATION:	()
BEDROOMS:	4
Bathrooms:	2
Build:	122 (m2)
Plot:	-
Terrace:	-
Year:	-
Floor:	-
Old price	-

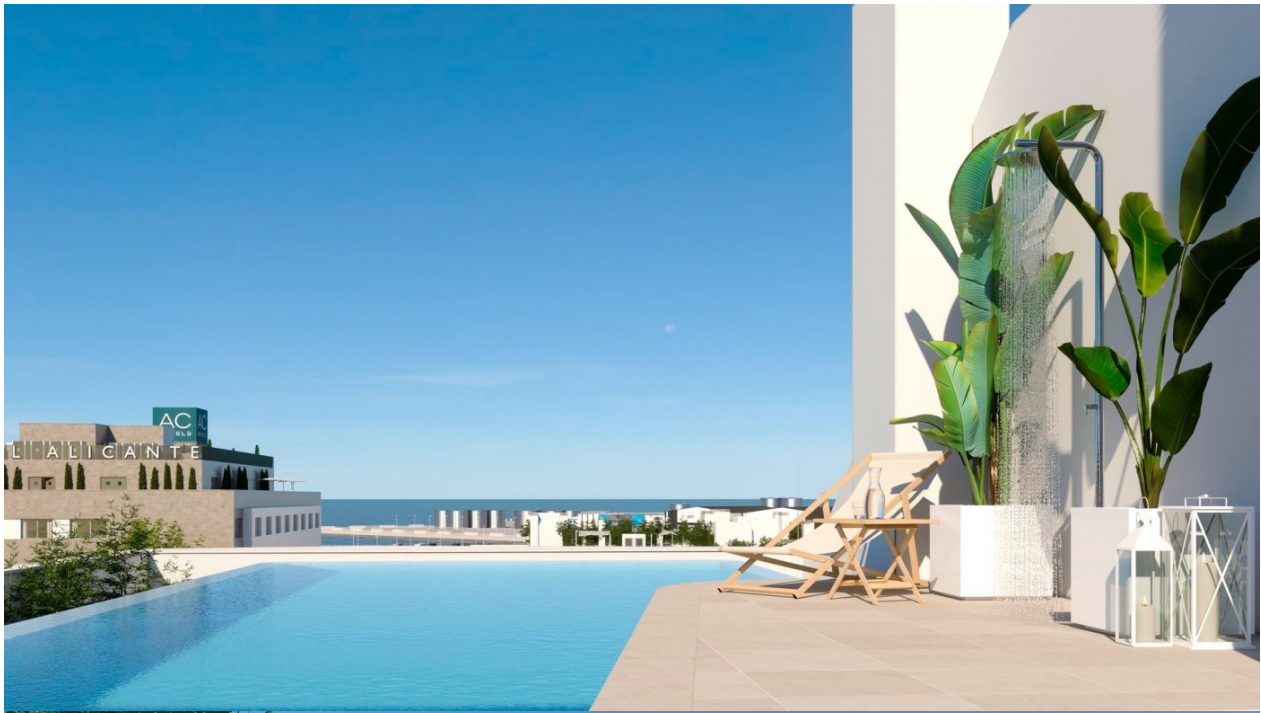


DESCRIPTION

NEW BUILD APARTMENTS IN ALICANTE CITY New build residential located close to the port of Alicante, walking distance to the sea and to the city centre. This residential offers 2, 3 or 4 bedroom apartments for everyone to enjoy their own space. So that you enjoy maximum comfort in your new home, the house will be equipped with a complete installation of hot-cold air conditioning through ducts with drive in living room and bedrooms. The elevators with access from the garage to all the floors of the residential. The doors will be automatic and stainless steel in the cabin, and will be equipped with alarm and telephone service for emergencies. Residential includes a community garage, storage rooms, gym and a magnificent swimming pool located on the roof of the building. From the heights you will enjoy a pleasant bath while contemplating incredible views over the sea and the Alicante skyline. Development offer the best interior qualities and an exterior architecture in accordance with the aesthetics and needs of the XXI century. Apartments located in a privileged place with excellent communications and services that will make your life much more comfortable. Located in the middle of the Costa Blanca, Alicante is one most important tourist destinations in the Spanish east coast. The many golf courses, along with the tranquil waters of the Mediterranean Sea, are part of the appeal of this beautiful harbour city, which sits at the foot of the Castle of Santa Barbara, a silent witness to the numerous civilisations to have settled here. The coastline is, without a doubt, the favourite recreational spot for the people of Alicante. The Explanada de España promenade, located across from the port, is a lively boulevard dotted with terraces and pavement cafes.

VIEWS

- Panoramic views













Certificación energética en trámite **B**

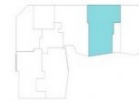
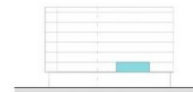
Portal 1. P1-A 4D



Superficies:

Vivienda **4D**

Superficie útil interior	98.03 m²
Superficie útil terrazas	6.51 m²
Superficie construida interior	111.52 m²
Superficie construida incluidas ZZCC	122.79 m²



"Experience our experience - Because you deserve the best"