



REF: # 11823

()



INFO

PRICE: 275.000 €

PROPERTY TYPE: Apartment

LOCATION: ()

BEDROOMS: 2

Bathrooms: 2

Build: 80 (m2)

Plot: -

Terrace: 16 (m2)

Year: -

Floor: -

Old price -



DESCRIPTION

NEW BUILD RESIDENTIAL IN TORREVIEJA New Build residential just 5 minutes walk from Los Locos beach, in the centre of Torrevieja. This residential has 16 properties, with 1, 2 or 3 bedrooms and 1 and 2 bathrooms, all with terraces from 7m2 to 55m2, facing South or West, with community solarium, jacuzzi, chillout area and sauna. An options underground parking space at an extra cost. Torrevieja is a Spanish town in the province of Alicante, on the Costa Blanca. It is known for its typically Mediterranean climate and coastline. It has boardwalks with resorts along its sandy beaches. The small Museum of the Sea and Salt houses exhibitions on the fishing and salt history of the city. In the interior, the Lagunas de La Mata-Torrevieja Natural Park has trails and two salty lagoons, one pink and the other green. Alicante airport located 40 minutes away and Murcia airport about 1 hour away.

STYLE <ul style="list-style-type: none">• Modern• Contemporary	VIEWS <ul style="list-style-type: none">• Panoramic views	AIRCONDITIONING <ul style="list-style-type: none">• Central airconditioning	DISTANCE TO : <div>Beach : 200 m</div> <div>Airport: 40 Km</div> <div>Town center : 50 m</div>
FURNITURE <ul style="list-style-type: none">• Not furnished	MAIN LIVING AREA <ul style="list-style-type: none">• Sauna	FLOORING <ul style="list-style-type: none">• Tile floors	KITCHEN <ul style="list-style-type: none">• Open kitchen
EXTRA <ul style="list-style-type: none">• Outdoor jacuzzi• Built in wardrobes• Reinforced door• Double glazed windows			





















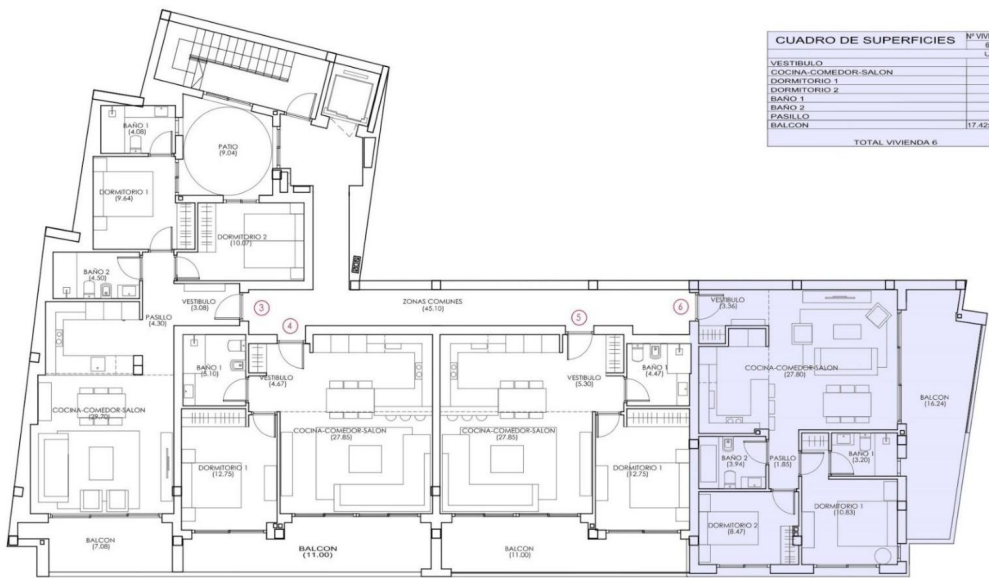






VIVIENDA 6

La vista desde arriba



CUADRO DE SUPERFICIES	N° VIVIENDA		PLANTA	TIPO
	6	1*		
	U	CONSTRUIDAS		
VESTIBULO	3.36			
COCINA-COMEDOR-SALON	27.80			
DORMITORIO 1	10.93			70.19
DORMITORIO 2	8.47			
BANO 1	3.20			
BANO 2	3.94			
PASILLO	1.89			
BALCON	17.42x0.50=8.71	19.86x0.50=9.93		
TOTAL VIVIENDA 6		68.16	80.12	

PLANTA PRIMERA 1



"Experience our experience - Because you deserve the best"