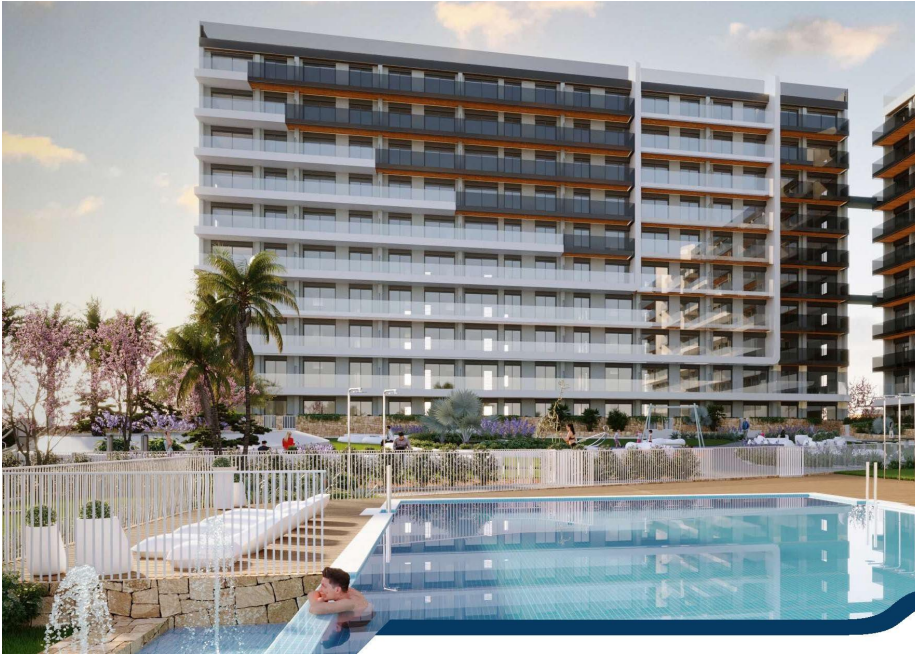




REF: # 11952

()



#### INFO

|                |           |
|----------------|-----------|
| PRICE:         | 475.000 € |
| PROPERTY TYPE: | Penthouse |
| LOCATION:      | ()        |
| BEDROOMS:      | 3         |
| Bathrooms:     | 2         |
| Build:         | 92 (m2)   |
| Plot:          | -         |
| Terrace:       | -         |
| Year:          | -         |
| Floor:         | -         |
| Old price      | -         |



#### DESCRIPTION

**NEW BUILD RESIDENTIAL COMPLEX IN PUNTA PRIMA** New Build residential complex of 220 apartments in Punta Prima, Torrevieja. Apartments with 2 and 3 bedrooms and 2 bathrooms, open plan kitchen with living room, fitted wardrobes, all of them with large terraces. Ground floor apartments with garden and penthouses with solarium. All homes are delivered with an underground parking space. The residential has garden areas with swimming pools and paddle tennis court. Children can enjoy their own children's pool, as well as a children's play area. Punta Prima, located just 5 km from Torrevieja, is characterized by good communication and health infrastructures, the proximity to Alicante airport, and the number of services open throughout the year. Just 10 km away we can find the golf courses of Villamartín, Campoamor, Las Ramblas, Las Colinas and Lo Romero, as well as the commercial centres of La Zenia and Habaneras.

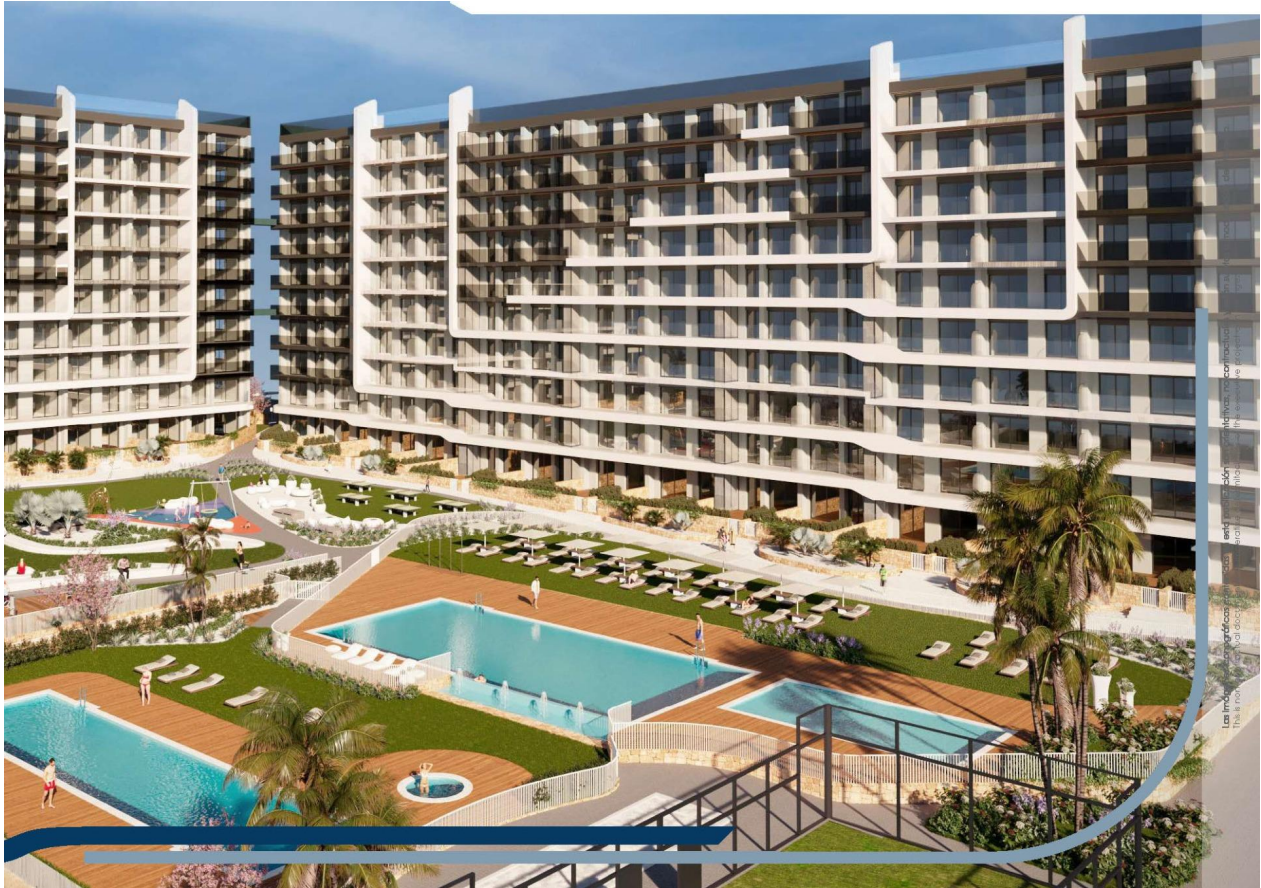
# VIEWS

- Panoramic views

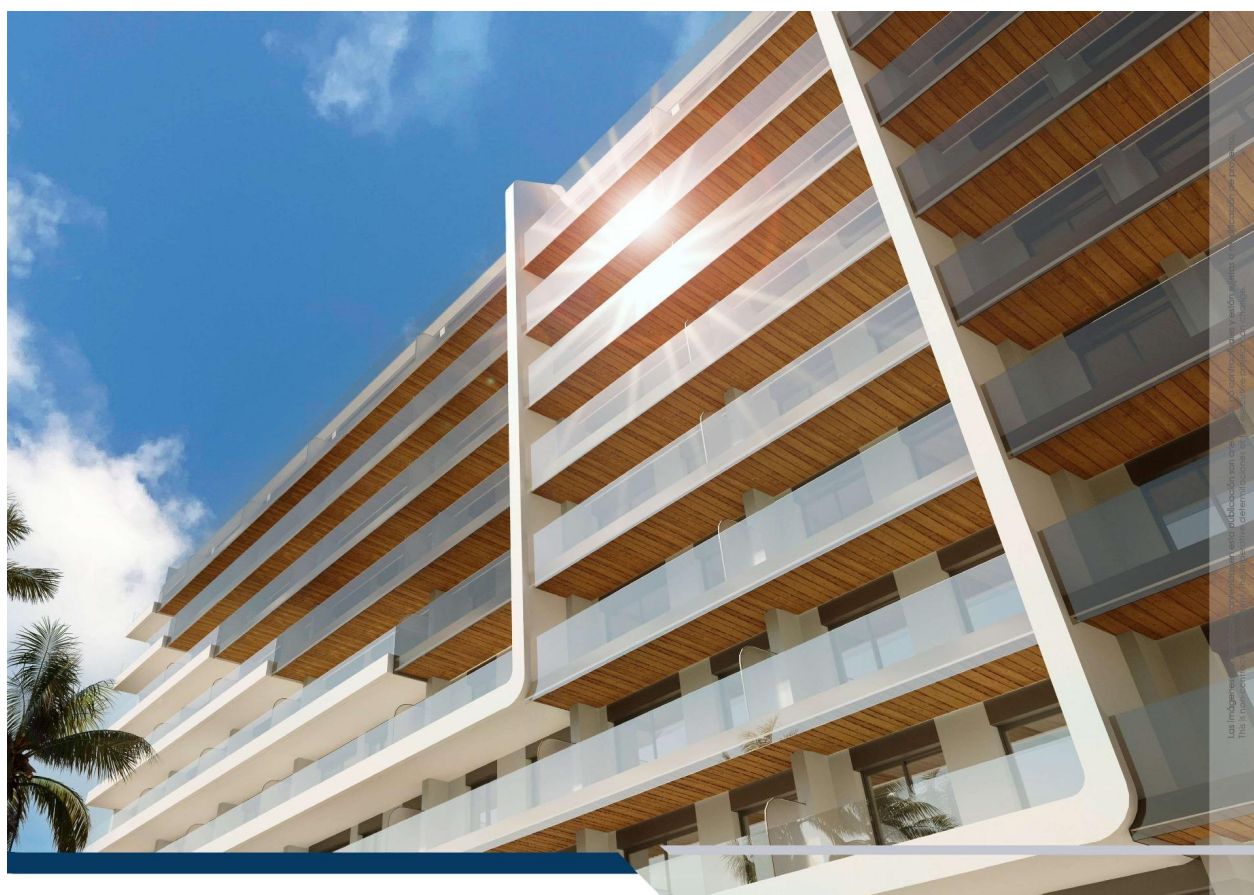






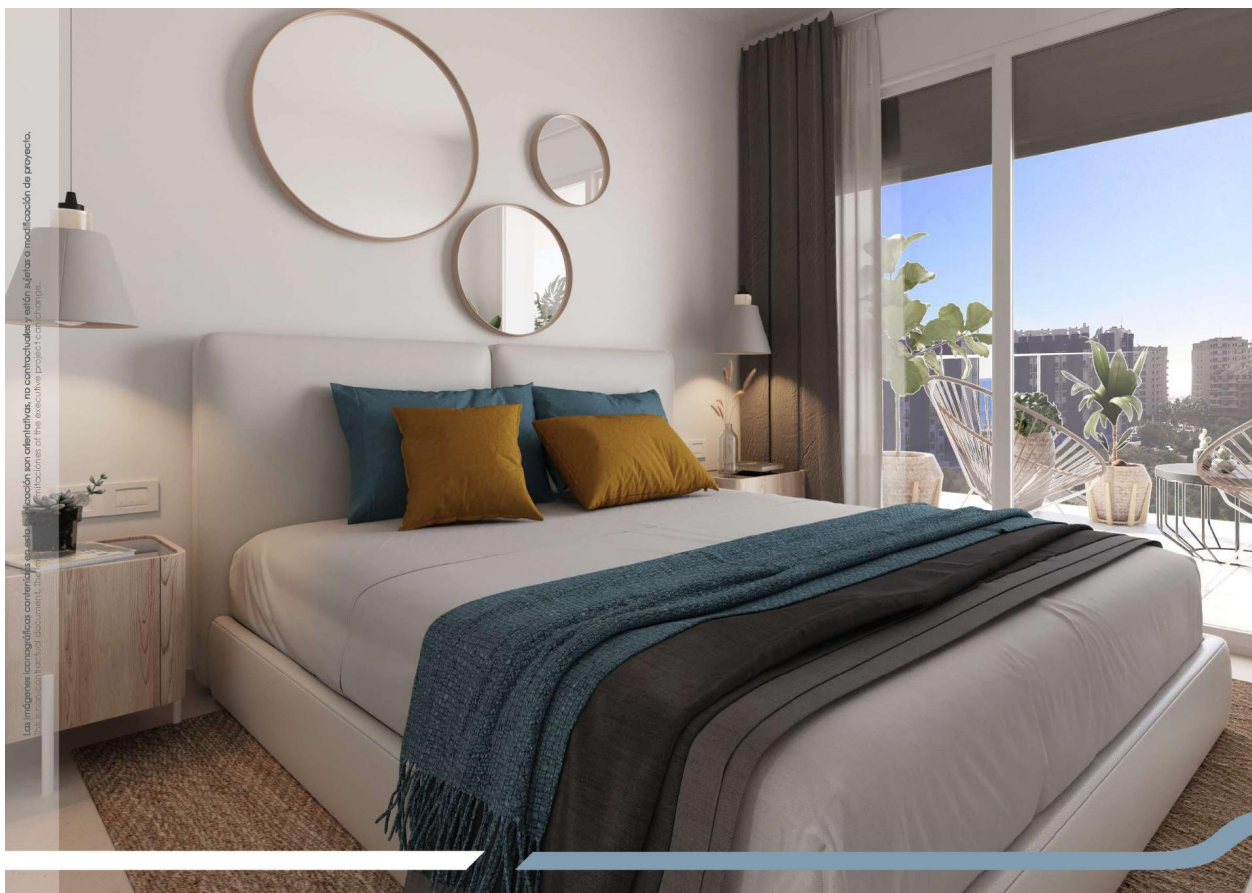


















# VIVIENDA TIPO 3A /HOUSE TYPE 3A

ESCALERAS / STAIRCASE  
1-7-B-11 / 1-7-B-11  
P9 Y SOLARIUM / P9 AND SOLARIUM

## SUPERFICIES ÚTILES / USEFUL AREA

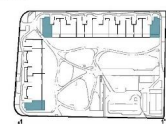
| SUPERFICIES ÚTILES INTERIORES / USEFUL INTERIOR AREA |          |
|--|----------|
| 1 ACCESO / ACCESS                                    | 4.68 m²  |
| 2 PASO / HALLWAY                                     | 1.75 m²  |
| 3 ESTAR-COM-COCINA / KITCHEN-LIVING                  | 31.68 m² |
| 4 TENEDERO (100%) / UTILITY ROOM                     | 2.52 m²  |
| 5 DORMITORIO 01 / BEDROOM 01                         | 13.00 m² |
| 6 DORMITORIO 02 / BEDROOM 02                         | 8.60 m²  |
| 7 DORMITORIO 03 / BEDROOM 03                         | 9.22 m²  |
| 8 BAÑO 01 / BATHROOM 01                              | 4.73 m²  |
| 9 BAÑO 02 / BATHROOM 01                              | 3.74 m²  |
| 10 ESCALERA / STAIRCASE                              | 1.38 m²  |
|  | 81.30 m² |

| SUPERF. ÚTILES EXTERIORES / USEFUL EXTERIOR AREA |          |
|--|----------|
| 11 TERRAZA 01 (100%) / TERRACE 01                | 19.39 m² |
| 12 SOLARIUM / SOLARIUM                           | 30.55 m² |
|  | 69.94 m² |

SUP. ÚTIL TOTAL/TOTAL USEFUL AREA 151.24 m²

## SUPERFIC. CONSTRUIDAS /BUILT AREA

|   |           |
|---|-----------|
| SUP. CONST. INTERIOR /INTERIOR BUILT AREA   | 95.67 m²  |
| SUP. CONST. EXT. (50%) / EXT. BUILT AREA    | 1.33 m²   |
| SUP. CONST. E/C /BUILT AREA OF SHARED AREAS | 12.74 m²  |
| SUP. CONST. TOTAL/TOT. BUILT AREA           | 109.74 m² |



0 1 2 3 4 5 m E:1/125

Las superficies indicadas lo son con carácter meramente informativo, no contractual, y pueden sufrir ligeras variaciones por necesidades técnicas del proceso de construcción.  
The indicated areas are for information purposes only, not contractual, and may vary slightly by technical requirements of the construction process.

"Experience our experience - Because you deserve the best"