



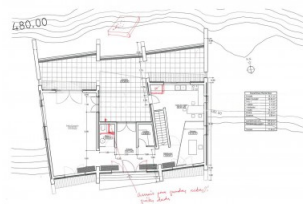
REF: # 1603

()



#### INFO

<b>PRICE:</b>	150.000 €
<b>PROPERTY TYPE:</b>	Building Plot
<b>LOCATION:</b>	()
<b>BEDROOMS:</b>	-
<b>Bathrooms:</b>	-
<b>Build:</b>	-
<b>Plot:</b>	13.000 (m2)
<b>Terrace:</b>	-
<b>Year:</b>	-
<b>Floor:</b>	-
<b>Old price</b>	-



#### DESCRIPTION

Large property Guadalest 13000 m2 The property is located in a southeast facing slope with beautiful views of the valley and the mountains sun from morning to about 16 o'clock The property has previously been agricultural land, and therefore banks are being built, ie large flat areas that are utilizable It can be built almost 270 m2 of housing on the plot Project approved by the arkitektera kolegiat (3 bedrooms 2 bathrooms) as well as basic surveys are included in the property (cost about 10000 €) It is about 10 min to drive to La Nucia / Polop with shopping resturants etc Guadalest is 6 min away Great for kennel, horse breeding, or just as beautiful mountain property Building cost of high standard approx. 1000 € per m2

VIEWS

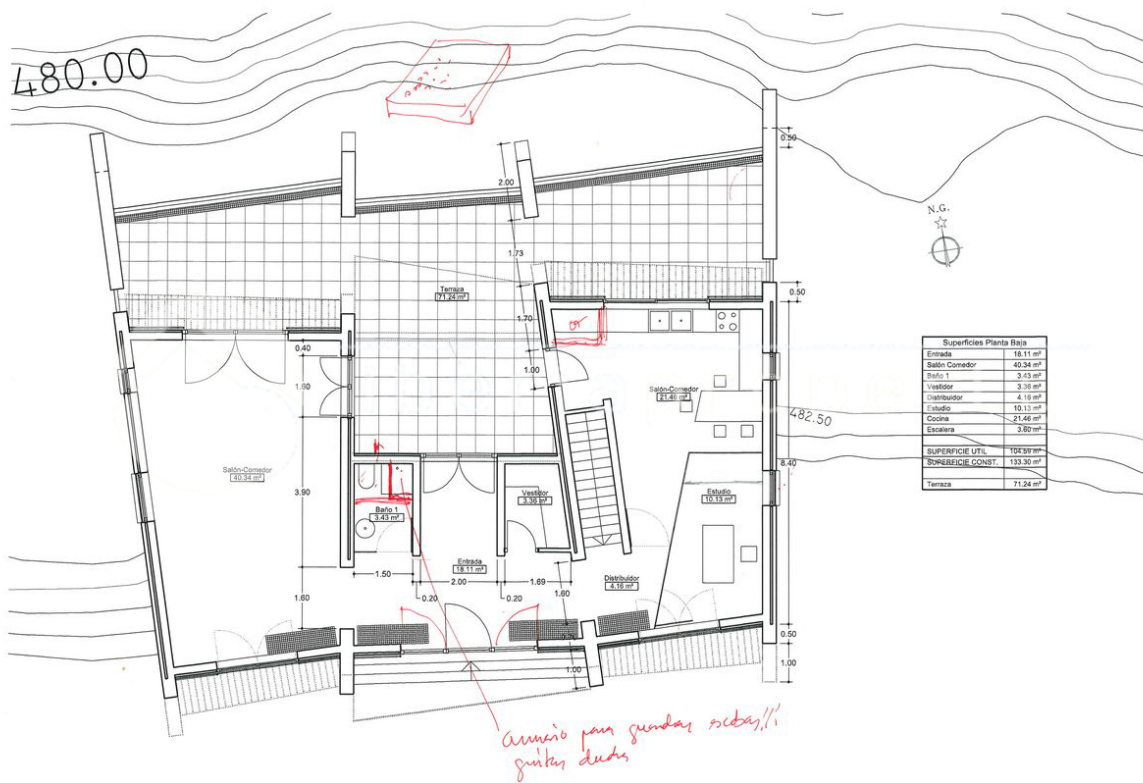
- Panoramic views
- Mountain views

ORIENTATION

South east

---





























*"Experience our experience - Because you deserve the best"*