



REF: # 4287

()



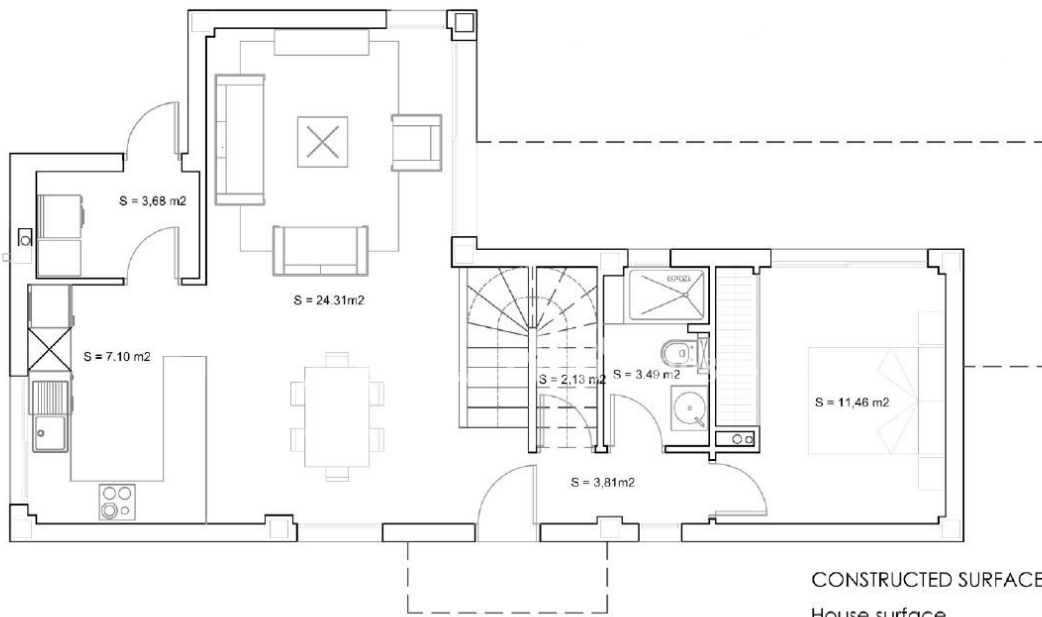
#### INFO

<b>PRICE:</b>	325.000 €
<b>PROPERTY TYPE:</b>	Villa
<b>LOCATION:</b>	()
<b>BEDROOMS:</b>	3
<b>Bathrooms:</b>	3
<b>Build:</b>	134 (m2)
<b>Plot:</b>	331 (m2)
<b>Terrace:</b>	43 (m2)
<b>Year:</b>	-
<b>Floor:</b>	-
<b>Old price</b>	315.000 €

#### DESCRIPTION

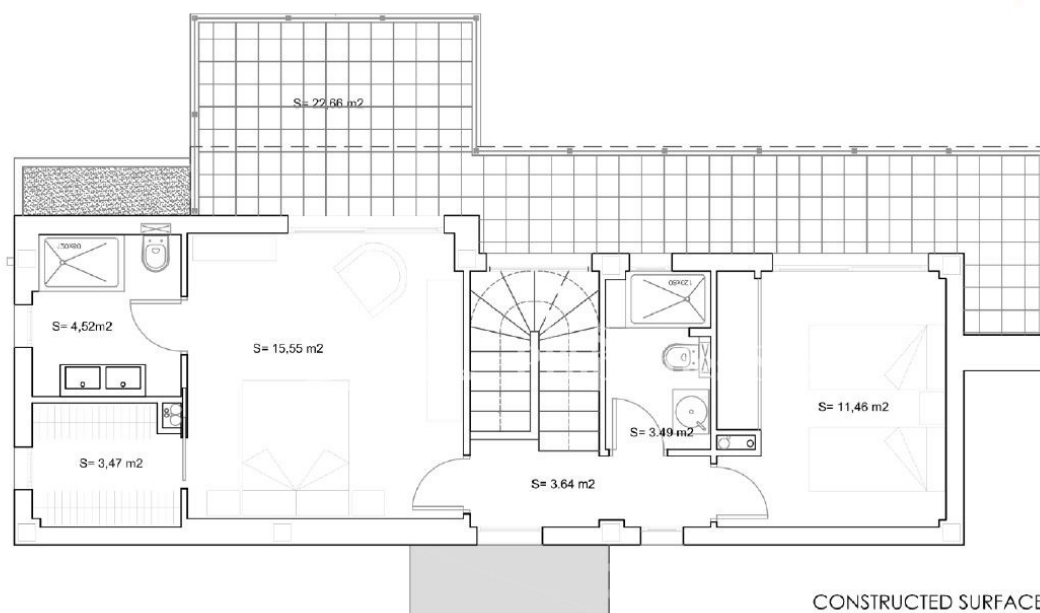
KEY READY VILLA located in SANTIAGO DE LA RIBERA (Murcia) 10 minutes walk from the BEACH. A luxury detached villa close to the sea including a plot of 315m2, 3 bedrooms, 3 bathrooms (2 ensuite), with a very nice private swimming pool of 3x6 and a completely finished garden and includes white goods. The two-storey Villa boasts 3 bedrooms, 3 bathrooms, modern kitchen and mezzanine level on the first floor overlooking the open-plan lounge/dining room which is fitted with floor-to-ceiling windows allowing the natural light to flood through and leading to a private garden and pool. The property includes off-road parking for two cars. The development is just a 10-minute walk from the beach, with local bus/train links only ten minutes from the properties. RMU Corvera International Airport is a 30 minute drive and Alicante Airport only 45 minutes via the AP-7 highway and N332 coast road.

<b>STYLE</b>	<b>VIEWS</b>	<b>AIRCONDITIONING</b>	<b>DISTANCE TO :</b>
<ul style="list-style-type: none"><li>Contemporary</li></ul>	<ul style="list-style-type: none"><li>Panoramic views</li></ul>	<ul style="list-style-type: none"><li>Central airconditioning</li></ul>	Beach : 500 m
			Airport: 10 Km
			Town center : 500 m
<b>ORIENTATION</b>	<b>FURNITURE</b>	<b>PARKING</b>	<b>MAIN LIVING AREA</b>
South west	<ul style="list-style-type: none"><li>Not furnished</li></ul>	Parking no Cars: 1	<ul style="list-style-type: none"><li>Bathroom en-suite</li></ul>
<b>FLOORING</b>	<b>KITCHEN</b>	<b>GARDEN AND TERRACES</b>	<b>EXTRA</b>
<ul style="list-style-type: none"><li>Tile floors</li><li>Stone floors</li></ul>	<ul style="list-style-type: none"><li>Open kitchen</li><li>Equipped kitchen</li><li>Granite countertop</li></ul>	<ul style="list-style-type: none"><li>Covered terrace</li><li>Open terrace</li><li>Exterior lights</li><li>Automatic watering system</li><li>Palm trees</li><li>Landscaped</li><li>Fenced</li><li>Stone walls</li><li>Private garden</li></ul>	<ul style="list-style-type: none"><li>Built in wardrobes</li><li>Double glazed windows</li><li>Storage room</li></ul>



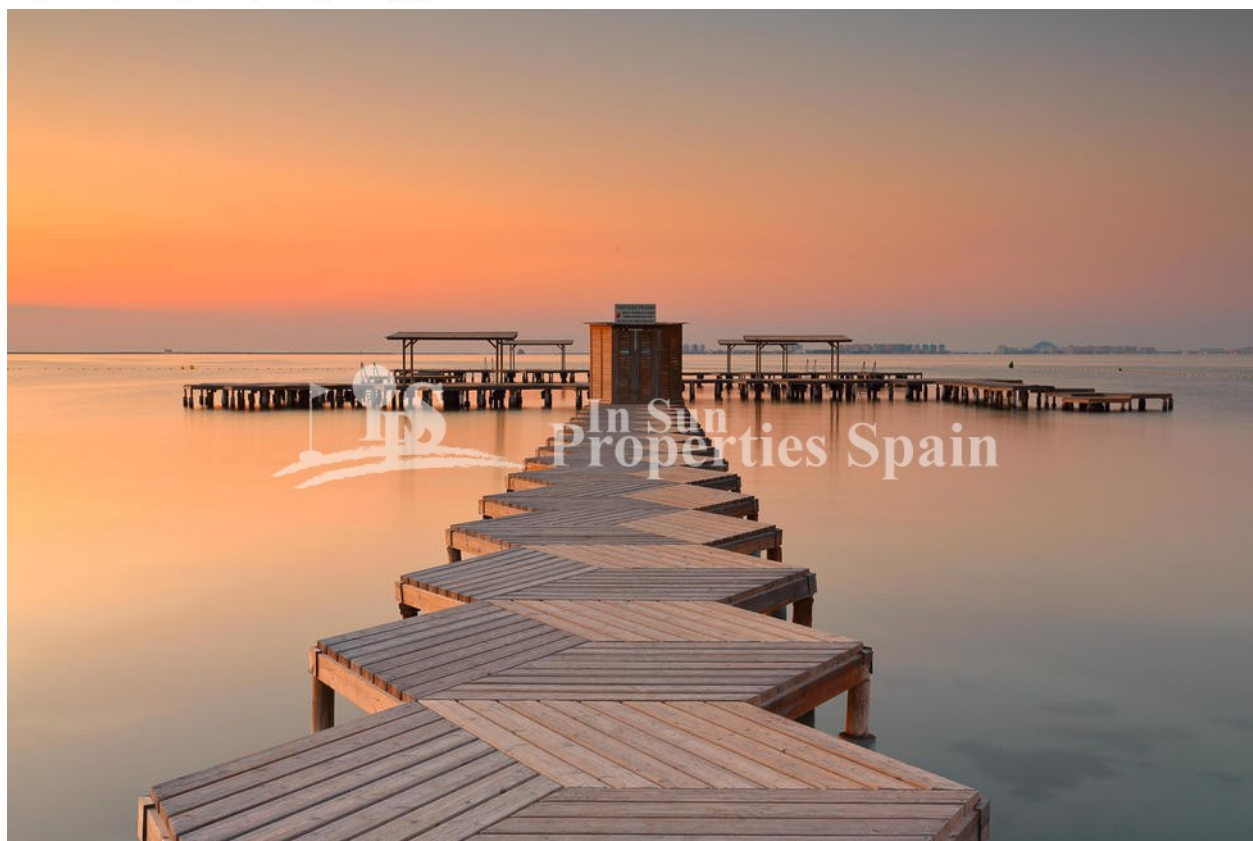
CONSTRUCTED SURFACES

House surface	143,85 m <sup>2</sup>
Ground floor surf.	79,32 m <sup>2</sup>
First floor surf.	64,53 m <sup>2</sup>
Downstair terrace surf.	20,46 m <sup>2</sup>
Upstair terrace surf.	22,66 m <sup>2</sup>



#### CONSTRUCTED SURFACES

House surface	143,85 m <sup>2</sup>
Ground floor surf.	79,32 m <sup>2</sup>
First floor surf.	64,53 m <sup>2</sup>
Downstair terrace surf.	20,46 m <sup>2</sup>
Upstair terrace surf.	22,66 m <sup>2</sup>









*"Experience our experience - Because you deserve the best"*