



REF: # 4481

()



#### INFO

**PRICE:** 249.000 €

**PROPERTY TYPE:** Villa (Semi detached)

**LOCATION:** ()

**BEDROOMS:** 3

**Bathrooms:** 3

**Build:** 115 (m2)

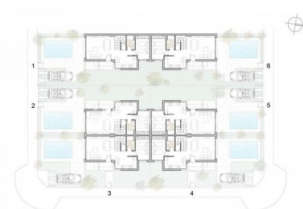
**Plot:** 175 (m2)

**Terrace:** 35 (m2)

**Year:**

**Floor:** -

**Old price** -



#### DESCRIPTION

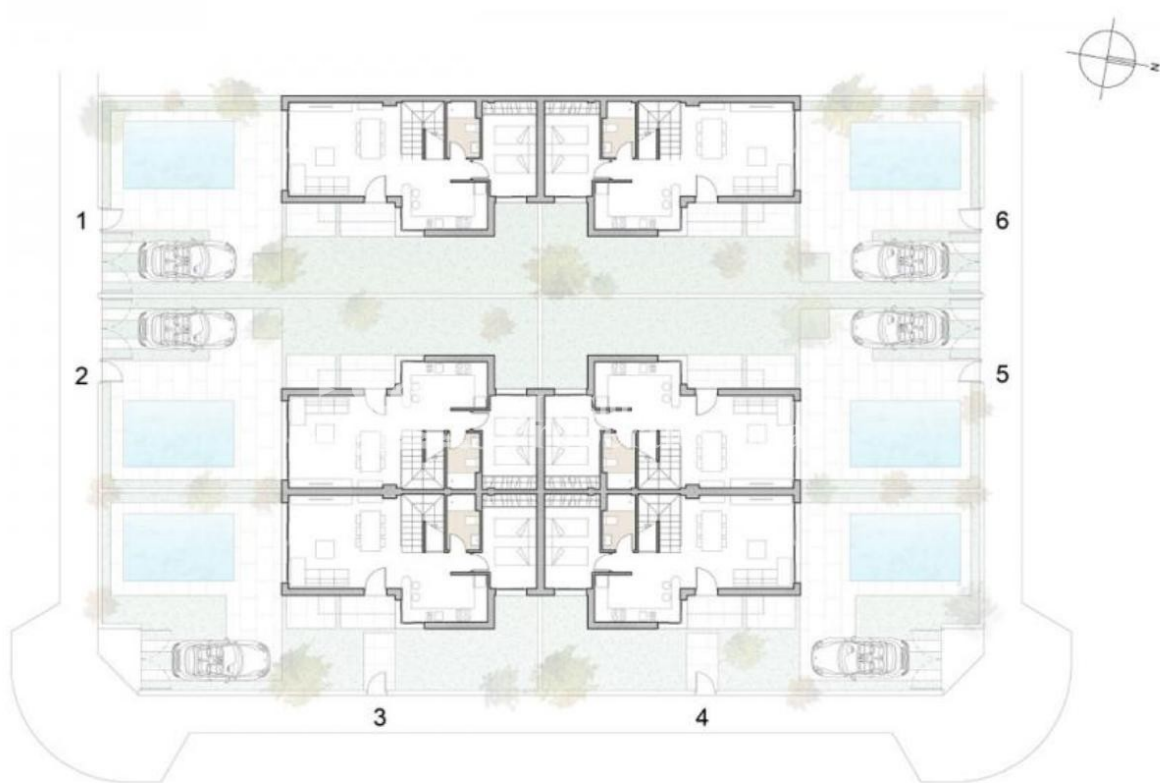
NEW residential development IN SAN PEDRO DEL PINTAR boasting 3 bedroom, 3 bathroom SEMI-DETACHED 115m2 Villas with private garden, POOL, 35m2 solarium, white goods and under floor heating to the bathrooms. Plots range from 175m2 to 180m2 and delivery is expected in December 2017. Residential Belich is located in a BEAUTIFUL PLACE, surrounded by two seas, the Mediterranean Sea and the MAR MENOR that together with the natural park of the lagoons of SAN PEDRO and the mud baths make a truly unique location. The location is ideal to enjoy the beaches and promenades that run alongside LO PAGAN and San Pedro del Pinatar, offering the chance to enjoy the wonderful beaches and the great variety of restaurants with excellent SEA VIEWS. This area also offers a variety of sports activities, including seasonal water sports. There are also some particularly good golf courses very close by. With the airport of Murcia just a short drive away, as well as the local Thalassia Spa and shopping centre, this really is an ideal location to start enjoying the Spanish lifestyle.

<b>STYLE</b> <ul style="list-style-type: none"><li>• Modern</li><li>• Contemporary</li></ul>	<b>VIEWS</b> <ul style="list-style-type: none"><li>• Panoramic views</li><li>• Sea views</li></ul>	<b>DISTANCE TO :</b> <div>Beach : 500 m</div> <div>Airport: 40 Km</div> <div>Town center : 1 Km</div>	<b>ORIENTATION</b> <div>South west</div>
<b>PARKING</b> <div>Parking no Cars: 1</div>	<b>FLOORING</b> <ul style="list-style-type: none"><li>• Tile floors</li><li>• Stone floors</li></ul>	<b>KITCHEN</b> <ul style="list-style-type: none"><li>• Open kitchen</li><li>• Equipped kitchen</li><li>• Granite countertop</li></ul>	<b>GARDEN AND TERRACES</b> <ul style="list-style-type: none"><li>• Covered terrace</li><li>• Open terrace</li><li>• Landscaped</li><li>• Private garden</li></ul>
<b>EXTRA</b> <ul style="list-style-type: none"><li>• Built in wardrobes</li><li>• Reinforced door</li><li>• Double glazed windows</li></ul>			















*"Experience our experience - Because you deserve the best"*