



REF: # 4559

()



#### INFO

**PRICE:** 700.000 €

**PROPERTY TYPE:** Villa

**LOCATION:** ()

**BEDROOMS:** 4

**Bathrooms:** 4

**Build:** 436 (m2)

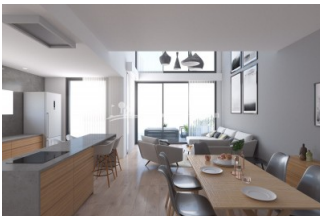
**Plot:** 401 (m2)

**Terrace:** 147 (m2)

**Year:**

**Floor:** -

**Old price** -



#### DESCRIPTION

Superb, modern 436m2 detached VILLA located just 250m from the BEACH at EL PINET and only 1km from the VILLAGE OF LA MARINA. Boasting 4 Bedrooms, 4 Bathrooms and guest WC, occupying a 401m2 plot with generous 112m2 roof solarium and 9x3 Pool. In the south of the municipal district of Elche, on an impressive strip of dunes, you will find the beach known as El Pinet, with a vast pine forest that has a natural extension to the south of the coast of Guardamar del Segura, and to the north, in the Nature Reserve of las Salinas of Santa Pola. A regular bus service runs between El Pinet and Elche. The closest airport is Alicante International and it is only a short 20 minute drive away.

<b>STYLE</b>	<b>VIEWS</b>	<b>DISTANCE TO :</b>	<b>ORIENTATION</b>
<ul style="list-style-type: none"><li>Contemporary</li></ul>	<ul style="list-style-type: none"><li>Panoramic views</li></ul>	Beach : 500 m Airport: 20 Km Town center : 1 Km	South East West
<b>PARKING</b>	<b>FLOORING</b>	<b>KITCHEN</b>	<b>GARDEN AND TERRACES</b>
Parking no Cars: 2	<ul style="list-style-type: none"><li>Tile floors</li><li>Stone floors</li></ul>	<ul style="list-style-type: none"><li>Open kitchen</li><li>Equipped kitchen</li><li>Granite countertop</li></ul>	<ul style="list-style-type: none"><li>Covered terrace</li><li>Open terrace</li><li>Landscaped</li><li>Private garden</li></ul>
<b>EXTRA</b>			
<ul style="list-style-type: none"><li>Built in wardrobes</li><li>Reinforced door</li><li>Double glazed windows</li></ul>			

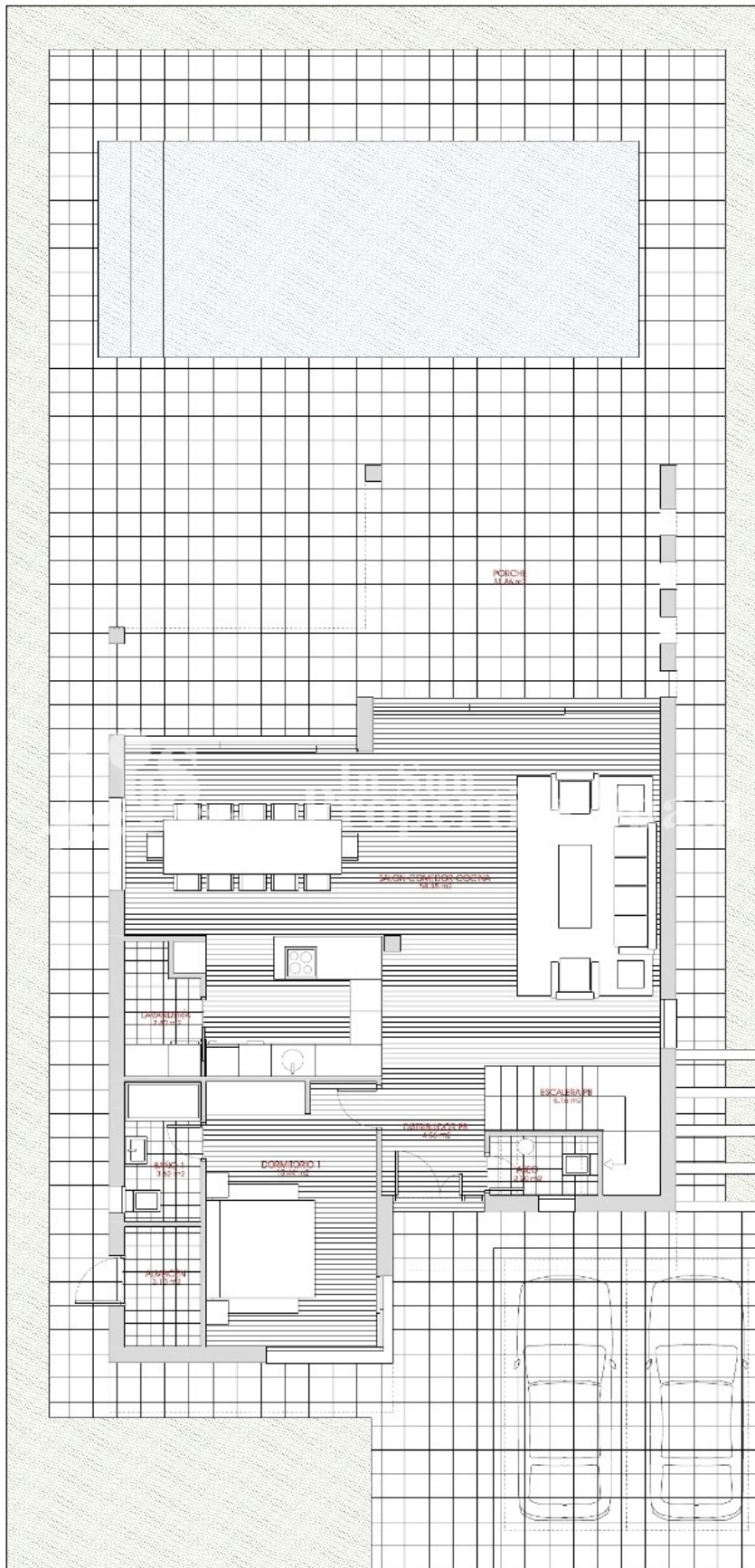


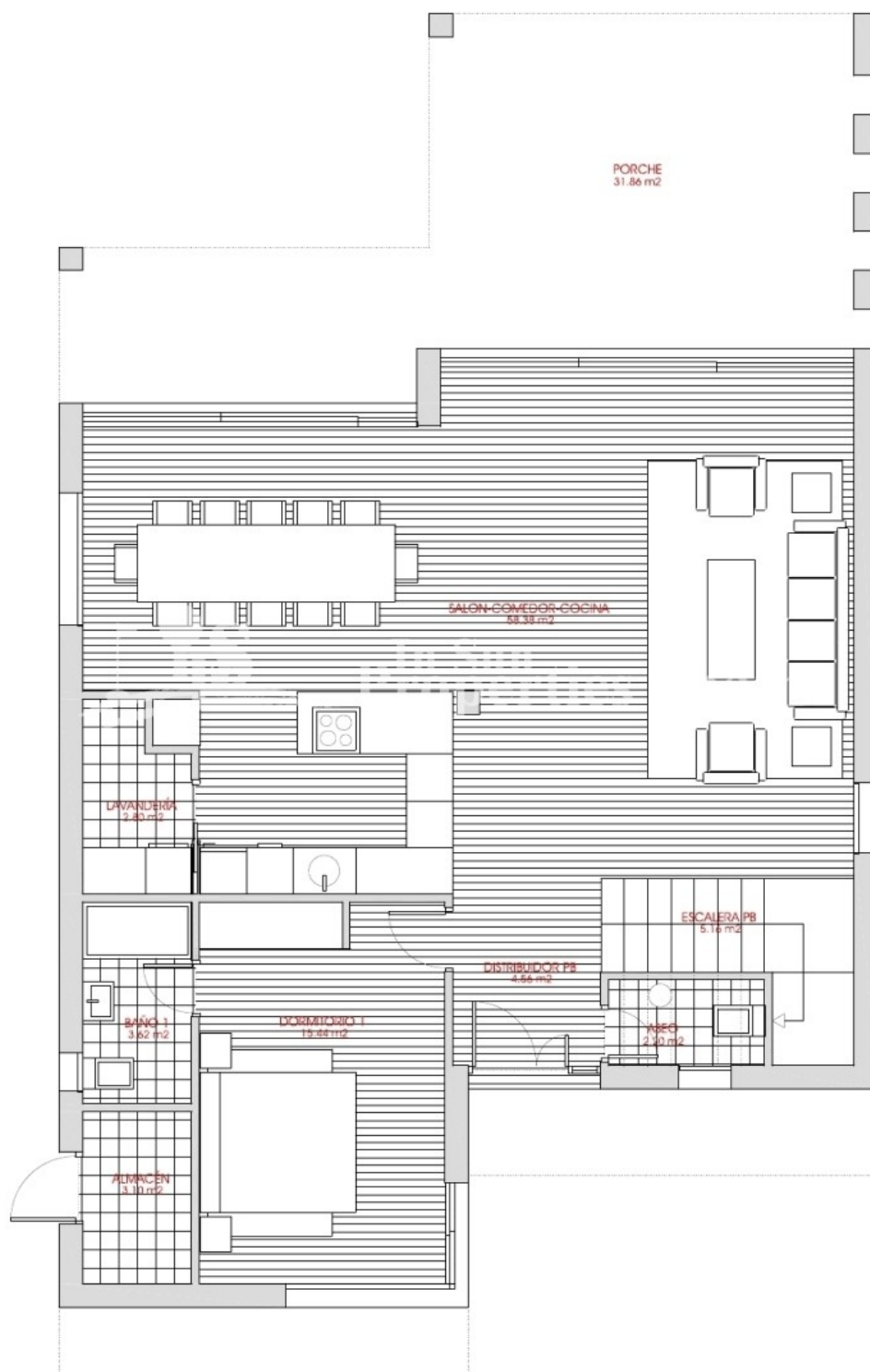


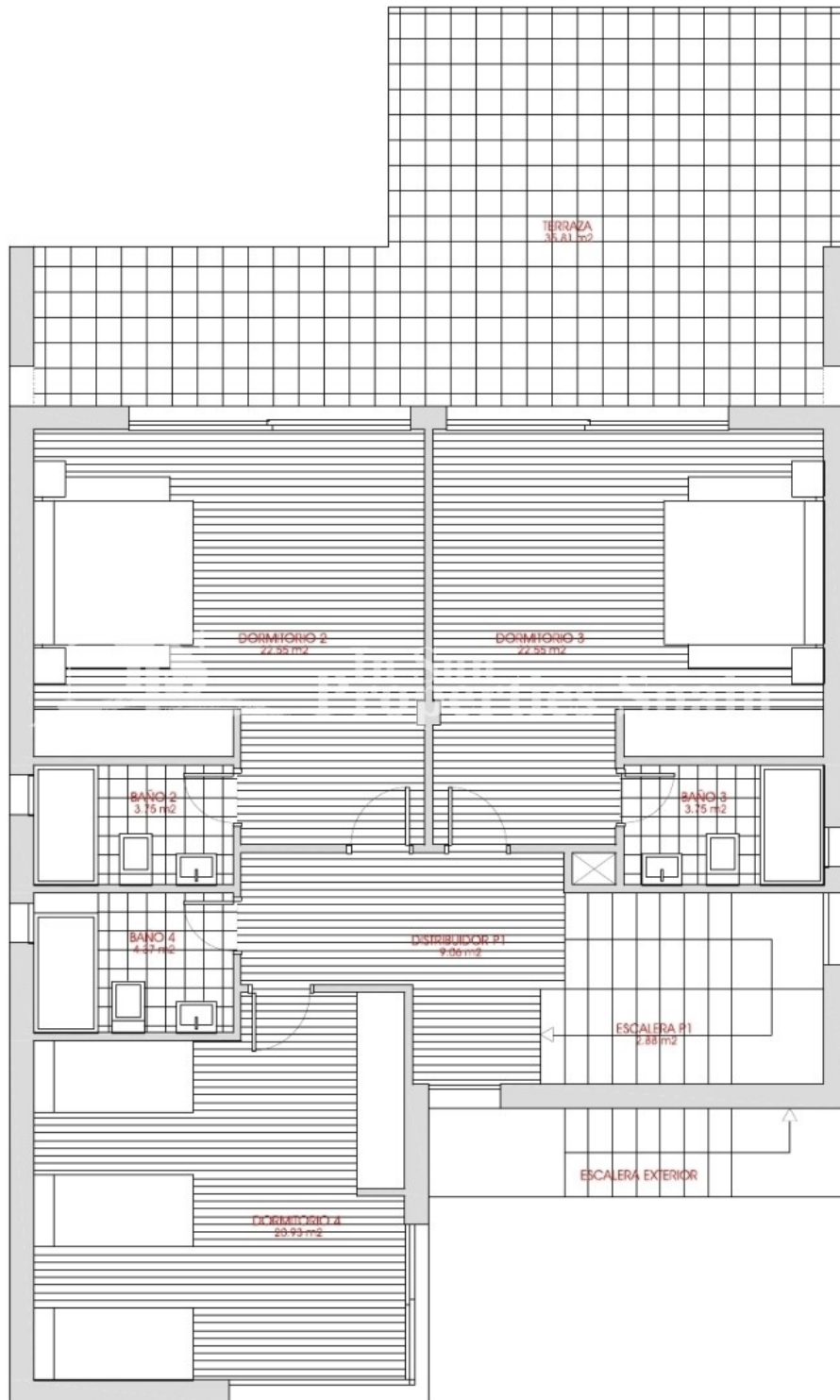




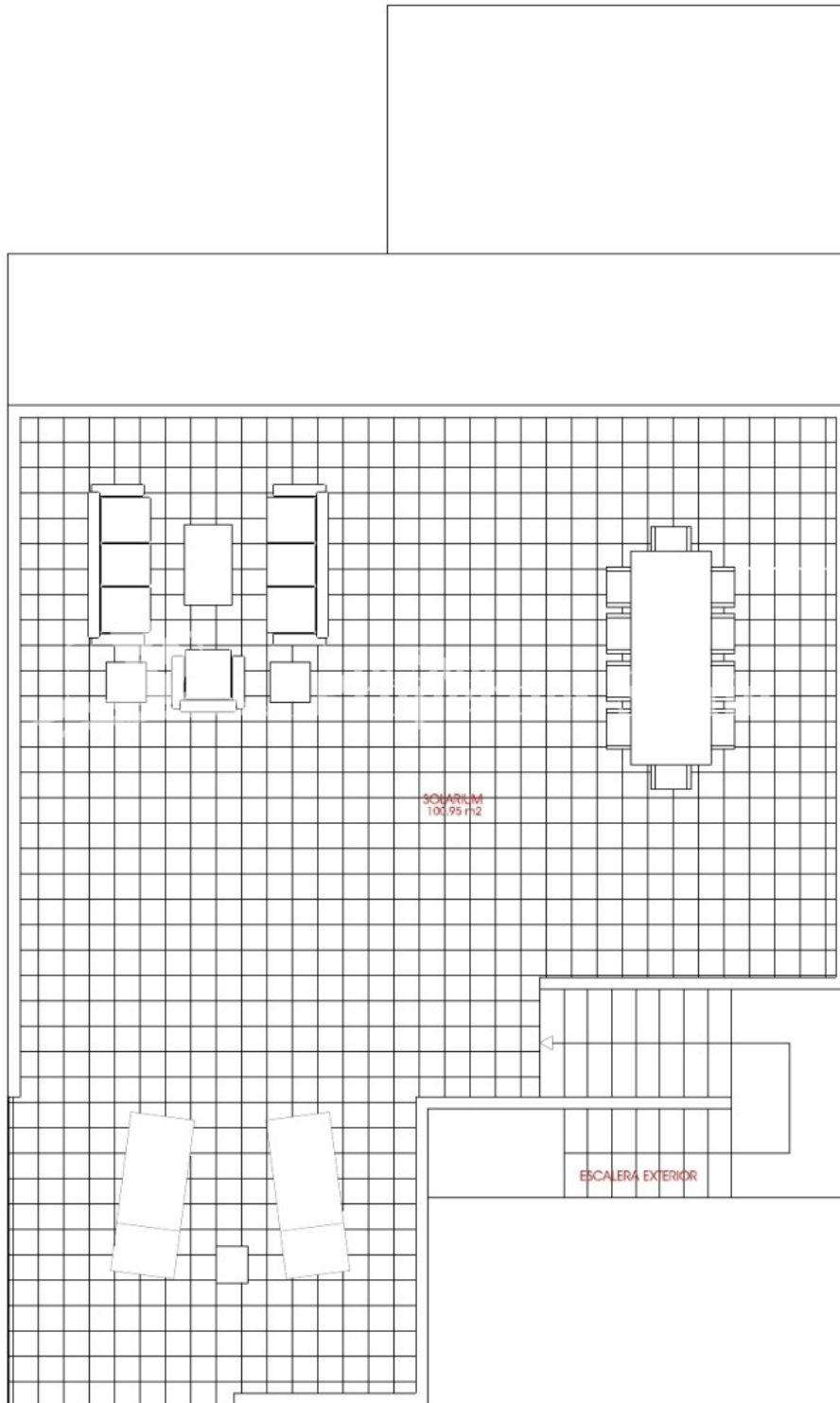
















*"Experience our experience - Because you deserve the best"*