



**In Sun  
Properties Spain**  
since 1999

REF: # 6380

()



#### INFO

**PRICE:** 329.950 €

**PROPERTY TYPE:** Villa

**LOCATION:** ()

**BEDROOMS:** 3

**Bathrooms:** 3

**Build:** 128 (m2)

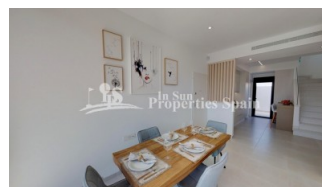
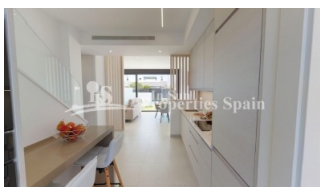
**Plot:** 190 (m2)

**Terrace:** 52 (m2)

**Year:**

**Floor:** -

**Old price** -



#### DESCRIPTION

New release of the popular premium Villas in SAN PEDRO DEL PINATAR, 600m/8 minutes walk from the beach. These 3 bedroom, 3 bathroom homes of 128m2 build are on minimum 190m2 plots and set in a nice residential area. Each with their own private pool, 52m2 garden and garage. Just 700m from the beaches. These off plan villas will have 2 levels and comprise of a large spacious open plan lounge with dining area and separate kitchen which comes fitted with modern design wall and base units equipped with Hob, oven and extractor fan. The 3 double bedrooms all come with fitted wardrobes and both first floor models have private bathrooms, there is also a family bathroom and utility room on the ground floor. Outside the property a generous garden with drive leading to a garage plus large patio areas offering lots of 'alfresco dining' options for an outdoor kitchen (next to the pool area), a private pool. The properties also come with installed air-con, kitchen appliances and pool cascade. Optional solarium (+15,500€) This 'exclusive' development off private homes are situated in a residential area – close to all amenities(8min walk), park areas, the beach (8min walk), bars, shops and restaurants. The Mar Menor and all the facilities it has to offer is just a short 10 minute walk away, there are many golf courses nearby. This 'exclusive' development of private homes are situated in a residential area – close to all amenities, walking distance to park areas, the beach, bars, shops and restaurants.

<b>STYLE</b> <ul style="list-style-type: none"><li>• Modern</li><li>• Contemporary</li></ul>	<b>VIEWS</b> <ul style="list-style-type: none"><li>• Panoramic views</li></ul>	<b>DISTANCE TO :</b> <div>Beach : 500 m</div> <div>Airport: 20 Km</div> <div>Town center : 1 Km</div>	<b>ORIENTATION</b> <div>South East West</div>
<b>FURNITURE</b> <ul style="list-style-type: none"><li>• Not furnished</li></ul>	<b>PARKING</b> <div>Garage no Cars : 1</div>	<b>FLOORING</b> <ul style="list-style-type: none"><li>• Tile floors</li><li>• Stone floors</li></ul>	<b>KITCHEN</b> <ul style="list-style-type: none"><li>• Open kitchen</li><li>• Equipped kitchen</li></ul>
<b>GARDEN AND TERRACES</b> <ul style="list-style-type: none"><li>• Covered terrace</li><li>• Open terrace</li><li>• Private garden</li></ul>	<b>EXTRA</b> <ul style="list-style-type: none"><li>• Built in wardrobes</li><li>• Reinforced door</li><li>• Double glazed windows</li></ul>		





















*"Experience our experience - Because you deserve the best"*