



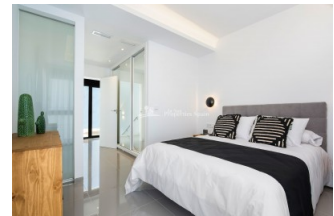
REF: # 6759

()



#### INFO

|                       |           |
|-----------------------|-----------|
| <b>PRICE:</b>         | 387.000 € |
| <b>PROPERTY TYPE:</b> | Villa     |
| <b>LOCATION:</b>      | ()        |
| <b>BEDROOMS:</b>      | 3         |
| <b>Bathrooms:</b>     | 3         |
| <b>Build:</b>         | 130 (m2)  |
| <b>Plot:</b>          | 312 (m2)  |
| <b>Terrace:</b>       | 58 (m2)   |
| <b>Year:</b>          |           |
| <b>Floor:</b>         | -         |
| <b>Old price</b>      | 366.000 € |



#### DESCRIPTION

A stunning detached Villa over two levels with solarium. This Villa is Key Ready and located in DONA PEPA, CIUDAD QUESADA. Occupying a spacious 312m2 private plot with swimming pool, this 130m2 Villa boasts 3 bedrooms (one on the ground floor and two on the first floor, one with uncovered 15m2 terrace leading to the solarium), 3 bathrooms (one on the ground floor) and 43m2 sunny solarium. The style is modern, contemporary with open plan living dining space, sleek modern kitchen and private parking. Dona Pepa is an expanding residential area just 10 minutes drive from the beach, 5 minutes walk from amenities, 35 minutes drive from Alicante Airport, under 10 minutes drive from the Golf Course and 5 minutes walk from the medical centre.

|   |  |  |  |
|---|--|--|--|
| <b>STYLE</b> <ul style="list-style-type: none"><li>• Modern</li><li>• Contemporary</li></ul>  | <b>DISTANCE TO :</b> <div>Beach : 5 Km</div> <div>Airport: 40 Km</div> <div>Town center : 1 Km</div> | <b>ORIENTATION</b> <div>South East West</div>  | <b>PARKING</b> <div>Parking no Cars: 1</div>   |
| <b>MAIN LIVING AREA</b> <ul style="list-style-type: none"><li>• Bathroom en-suite</li></ul>   | <b>FLOORING</b> <ul style="list-style-type: none"><li>• Tile floors</li><li>• Stone floors</li></ul> | <b>KITCHEN</b> <ul style="list-style-type: none"><li>• Open kitchen</li><li>• Equipped kitchen</li></ul> | <b>GARDEN AND TERRACES</b> <ul style="list-style-type: none"><li>• Open terrace</li><li>• Stone walls</li><li>• Private garden</li></ul> |
| <b>EXTRA</b> <ul style="list-style-type: none"><li>• Built in wardrobes</li><li>• Reinforced door</li><li>• Double glazed windows</li></ul> |  |  |  |

















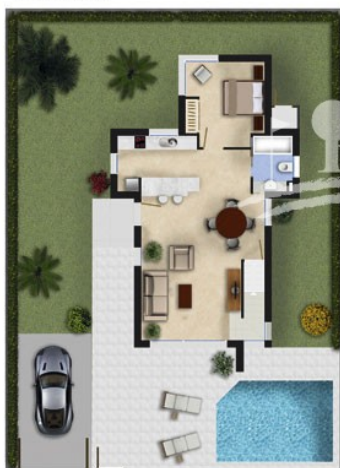


VILLAS IN  
**ATEKA**  
RESIDENTIAL

Villa Agata: 130m<sup>2</sup> Plot: 312m<sup>2</sup> Terrace: 18m<sup>2</sup> Roof Terrace: 43m<sup>2</sup>



Ground Floor



Upper Floor

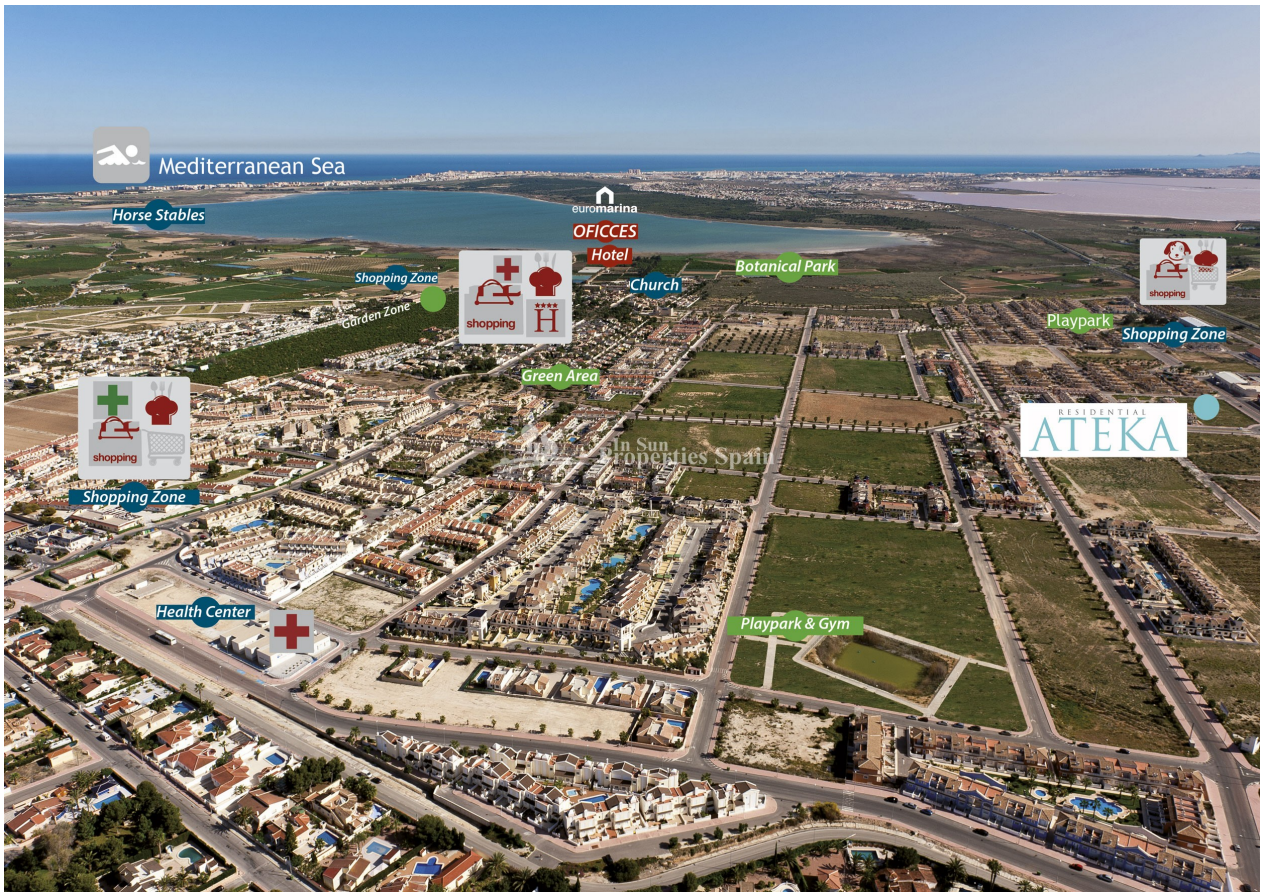


Solarium



Imagen Artística carece de valor contractual/Artistic Image free of contractual nature









*"Experience our experience - Because you deserve the best"*