



REF: # 9744



#### INFO

**PRICE:** 249.900 €

**PROPERTY TYPE:** Apartment

**LOCATION:**

**BEDROOMS:** 2

**Bathrooms:** 2

**Build:** 71 (m2)

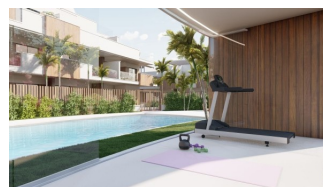
**Plot:** 21 (m2)

**Terrace:** 22 (m2)

**Year:** -

**Floor:** -

**Old price** -



#### DESCRIPTION

NEW BUILD RESIDENTIAL COMPLEX APARTMENT GROUND FLOOR IN PILAR DE LA HORADADA. This beautiful 71m2 ground floor apartment consists of 2 bedrooms, 2 bathrooms, a 22m2 private terrace and a 21m2 private garden. The complex has a large communal garden with pool, gym and playground for the kids. Each property has garage spaces and storerooms in the basement. Located in an unbeatable enclave within a large residential area of Pilar de la Horadada, it is a privileged place for families due to its easy access to all kinds of services and amenities. Pilar de la Horadada is a typical Spanish village in the most southern part of the Costa Blanca. The large main street has supermarkets, lots of shops, restaurants and bars and some lovely squares. The beautiful beaches of Torre de la Horadada and Mil Palmeras with fine sand promenade is just 5 minutes away. In addition to the original established Golf courses on the Orihuela Costa Villamartin, Las Ramblas, Real Campoamor and Las Colinas approximately 14km away, Pilar de la Horadada is also well served with the excellent course Lo Romero only 4.2km drive. The Airports of Corvera (Murcia) and Alicante are respectively 40 and 55 minutes away.

STYLE	DISTANCE TO :	PARKING	MAIN LIVING AREA
<ul style="list-style-type: none"><li>Modern</li></ul>	Beach : 4 Km Airport: 50 Km	Garage no Cars : 2	<ul style="list-style-type: none"><li>Gym</li></ul>
GARDEN AND TERRACES	EXTRA		
<ul style="list-style-type: none"><li>Open terrace</li><li>Private garden</li><li>Communal Garden</li></ul>	<ul style="list-style-type: none"><li>Reinforced door</li><li>Storage room</li></ul>		



## PROPERTY GALLERY

















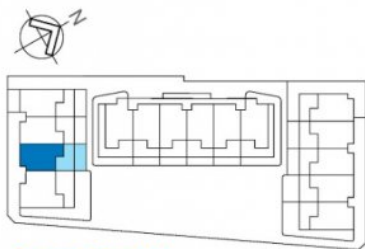




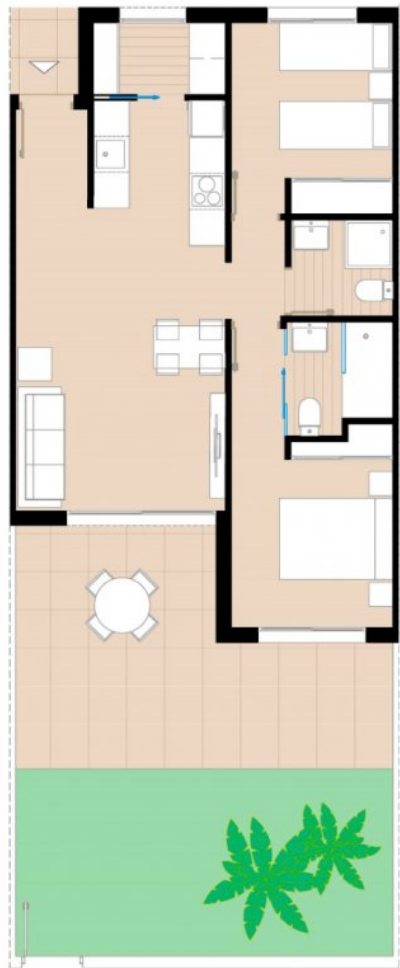




<b>Room - Estancia</b>	<b>3</b>
<b>Living room - Kitchen</b> (Estar - Cocina)	27,95
<b>Laundry room</b> (Galería)	3,75
<b>Bedroom 1</b> (Dormitorio 1)	12,26
<b>Bedroom 2</b> (Dormitorio 2)	9,98
<b>Bedroom 3</b> (Dormitorio 3)	0,00
<b>Bathroom 1</b> (Baño 1)	3,43
<b>Bathroom 2</b> (Baño 2)	3,14
<b>Covered Terrace</b> (Terraza Cubierta)	22,10
<b>Uncovered Terrace</b> (Terraza Descubierta)	21,65
<b>Solarium</b> (Solarium)	0,00
<b>Total Surface</b> (Superficie total)	<b>104,26</b>



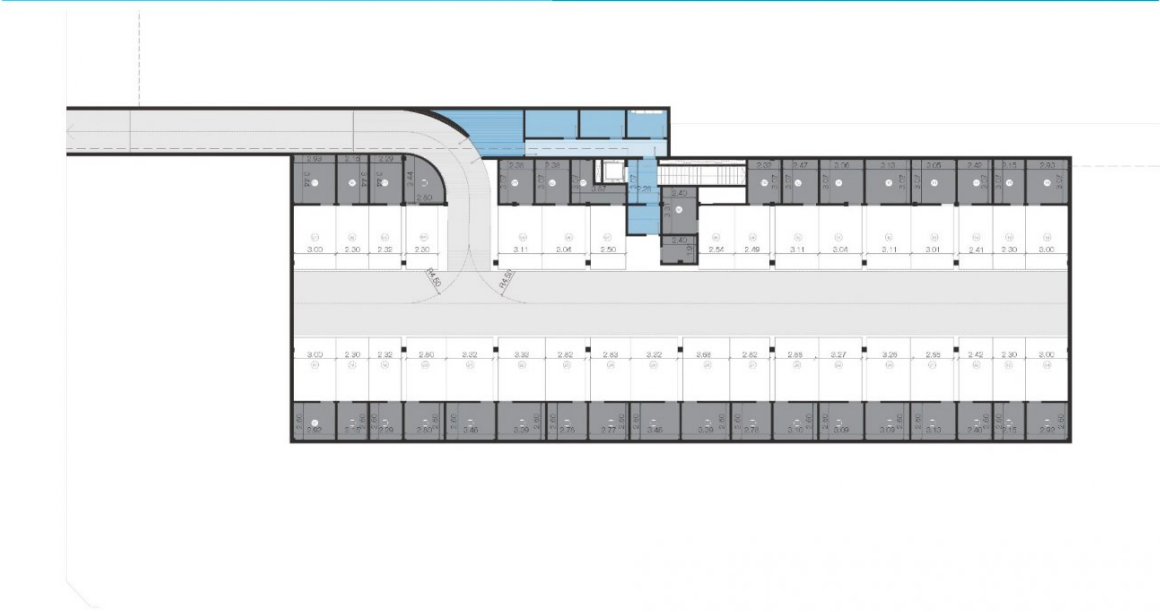
Complex / Complejo



Ground Floor/ Planta Baja  
(E:1/100)



Ground Floor / Planta Baja











*"Experience our experience - Because you deserve the best"*