



REF: # 9924

()



#### INFO

**PRICE:** 209.950 €

**PROPERTY TYPE:** Apartment

**LOCATION:** ()

**BEDROOMS:** 2

**Bathrooms:** 2

**Build:** 58 (m2)

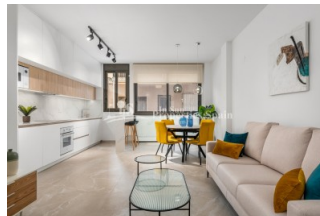
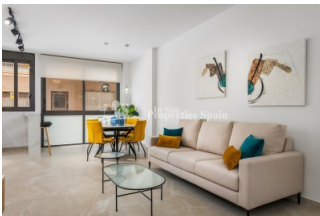
**Plot:** -

**Terrace:** 3 (m2)

**Year:**

**Floor:** -

**Old price** -



#### DESCRIPTION

NEW BUILD APARTMENT IN TORREVIEJA only 350m from El Cura beach. This 58m2 apartment consists of 2 bedrooms, 2 bathrooms. It has an open plan design with a kitchen integrated into the spacious living/dining areas, bright coloured interiors and glass balustrades. There is a cosy terrace that invites the fresh air and sunlight, where you can relax and enjoy the first sip of coffee in the morning. The apartment comes with the option of a garage space and storage room at an extra cost. Enjoy the sea views from the rooftop terrace of this modern building, where you will have access to a swimming pool with a waterfall and a relaxation area to unwind and make the most of the sunny days. Torrevieja is a Spanish town in the province of Alicante, on the Costa Blanca with 300 days of sunshine a year and an average temperature of 20°C. It is known for its superb promenade, restaurants, weekly Friday market and the Habaneras shopping centre. It has a wide range of cultural and leisure activities all year round. Only 15 minutes drive is "La Zenia Boulevard" the largest shopping centre in the Alicante region, it's a one-stop destination for clothes, shoes and general supplies. No matter what you're after, chances are you won't walk out empty-handed. In addition to the original established Golf courses on the Orihuela Costa Villamartin, Las Ramblas, Real Campoamor and Las Colinas, Torrevieja area is now also well served with excellent courses such as La Finca, La Marquesa, Las Colinas, Lo Romero and Vistabella offering different golf experiences with a variety of sea and mountain views. Alicante Airport is 45 minutes / 45kms drive away and Murcia (Corvera) is 55 mins / 68kms.

STYLE	VIEWS	DISTANCE TO :	KITCHEN
<ul style="list-style-type: none"><li>Modern</li></ul>	<ul style="list-style-type: none"><li>Panoramic views</li></ul>	Beach : 500 m <hr/> Airport: 50 Km <hr/>	<ul style="list-style-type: none"><li>Open kitchen</li></ul>
GARDEN AND TERRACES	EXTRA		
<ul style="list-style-type: none"><li>Open terrace</li></ul>	<ul style="list-style-type: none"><li>Reinforced door</li></ul>		



















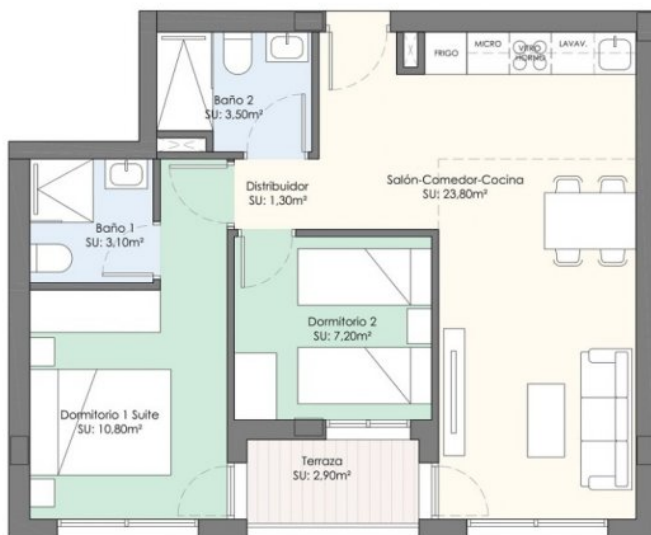








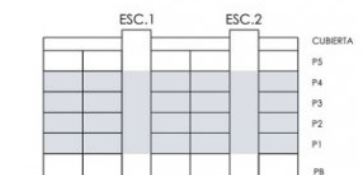
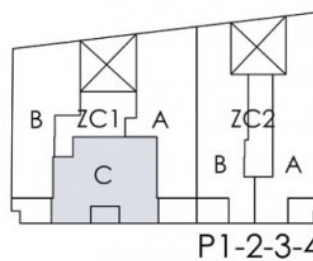


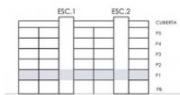
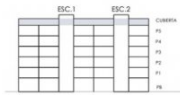


#### Vivienda 2 Dormitorios - C E1

SUP. ÚTIL	(m <sup>2</sup> )
Salón-Comedor-Cocina	23,80
Dormitorio 1	10,80
Baño 1	3,10
Dormitorio 2	7,20
Baño 2	3,50
Distribuidor	1,30
Terraza	2,90
<b>SUP. ÚTIL INTERIOR</b>	<b>49,70</b>

SUP. CONST	(m <sup>2</sup> )
Vivienda	59,80
Zona Común	11,90
Terraza cubierta	3,55
<b>SUP. CONST TOTAL</b>	<b>75,25</b>





















*"Experience our experience - Because you deserve the best"*