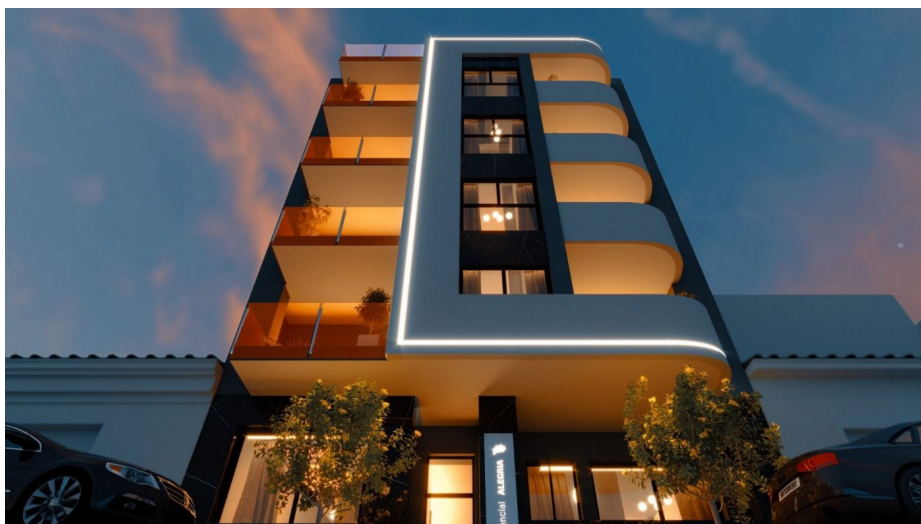




**In Sun
Properties Spain**
since 1999

REF: # 9933

()



INFO

PRICE: 249.000 €

PROPERTY TYPE: Apartment

LOCATION: ()

BEDROOMS: 2

Bathrooms: 2

Build: 100 (m2)

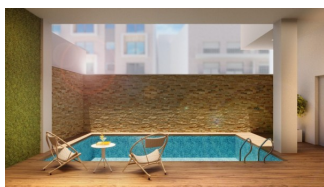
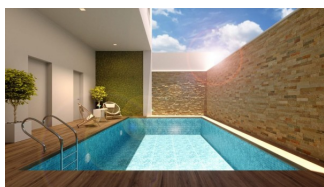
Plot: -

Terrace: 8 (m2)

Year:

Floor: -

Old price -

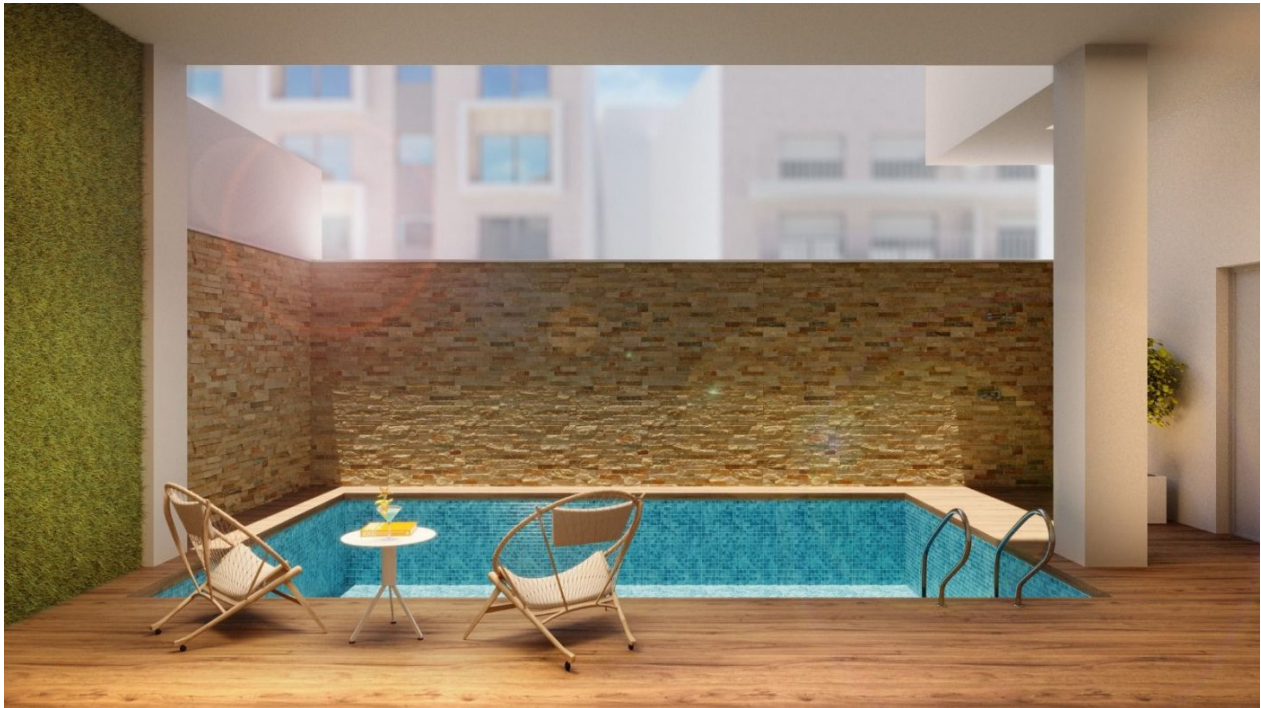


DESCRIPTION

NEW BUILD APARTMENT IN TORREVIEJA only 200m from the beach. This 100m2 apartment consists of 2 bedrooms, 2 bathrooms, open plan kitchen with the lounge area, fitted wardrobes and an 8m2 terrace. It is located just 200 meters from Playa del Cura. There is a communal swimming pool, solarium and a sauna for you to enjoy. Torrevieja is a Spanish town in the province of Alicante, on the Costa Blanca with 300 days of sunshine a year and an average temperature of 20°C. It is known for its superb promenade, restaurants, weekly Friday market and the Habaneras shopping centre. It has a wide range of cultural and leisure activities all year round. Only 15 minutes drive is "La Zenia Boulevard" the largest shopping centre in the Alicante region, it's a one-stop destination for clothes, shoes and general supplies. No matter what you're after, chances are you won't walk out empty-handed. In addition to the original established Golf courses on the Orihuela Costa Villamartin, Las Ramblas, Real Campoamor and Las Colinas, Torrevieja area is now also well served with excellent courses such as La Finca, La Marquesa, Las Colinas, Lo Romero and Vistabella offering different golf experiences with a variety of sea and mountain views. Alicante Airport is 45 minutes / 45kms drive away and Murcia (Corvera) is 55 mins / 68kms.

STYLE	VIEWS	DISTANCE TO :	MAIN LIVING AREA
<ul style="list-style-type: none">Modern	<ul style="list-style-type: none">Panoramic views	Beach : 200 m Airport: 40 Km	<ul style="list-style-type: none">Sauna
KITCHEN	GARDEN AND TERRACES	EXTRA	
<ul style="list-style-type: none">Open kitchen	<ul style="list-style-type: none">Open terrace	<ul style="list-style-type: none">Reinforced door	





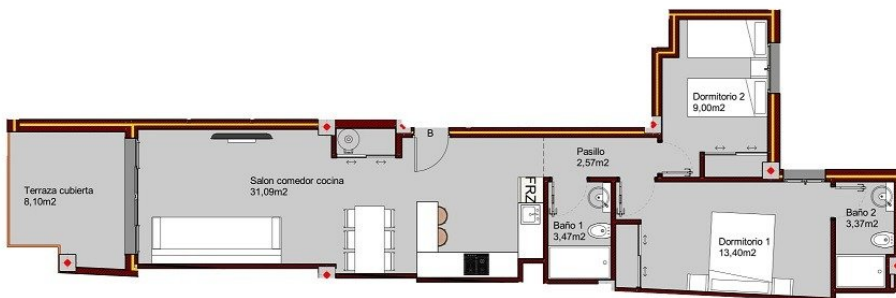




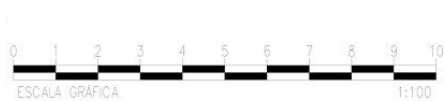




TIPO(1º,2º,3º y 4º)-B



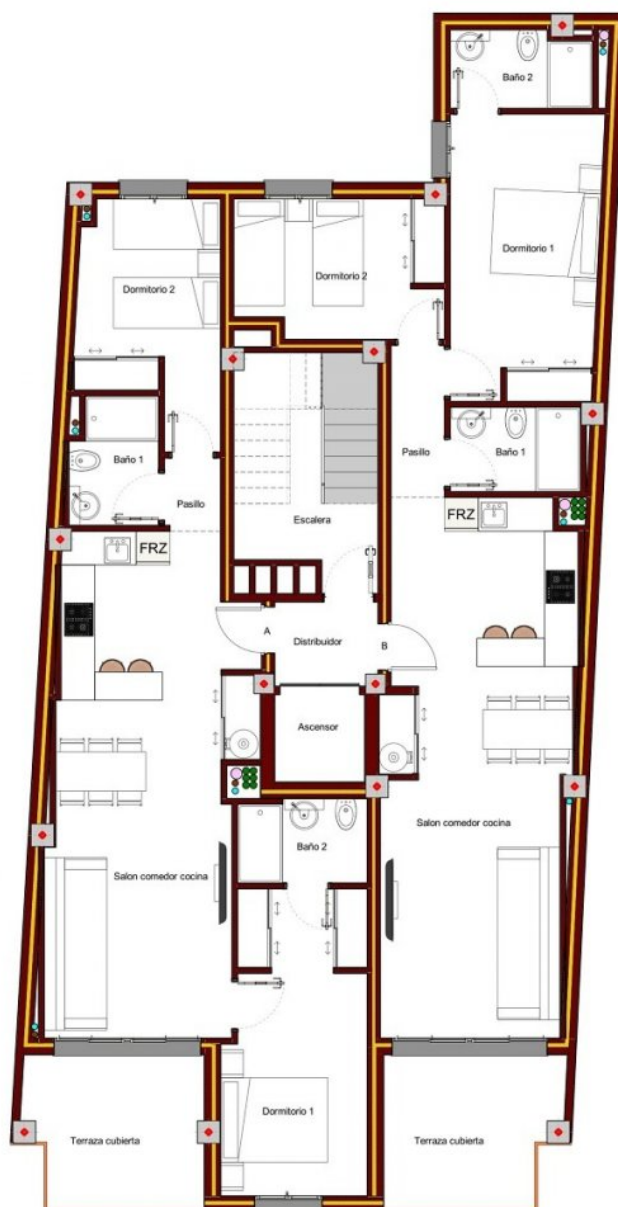
TIPO-B SUPERFICIES UTILES	
Salon Comedor Cocina	31,09m ²
Dormitorio 1	13,40m ²
Dormitorio 2	9,00m ²
Baño 1	3,47m ²
Baño 2	3,37m ²
Pasillo	2,57m ²
Terraza cubierta	8,10m ²
TOTAL SUP. UTIL	71,00m ²
TOTAL SUP. CONST+P.+ZC	100,26m ²



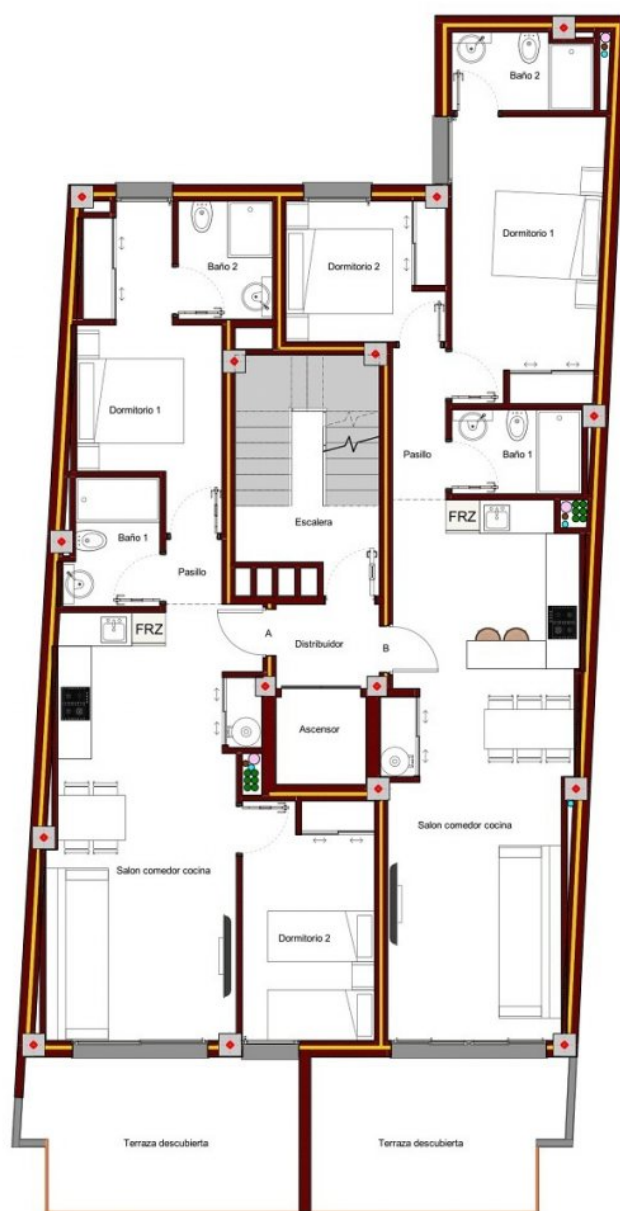
COM TIPO-B



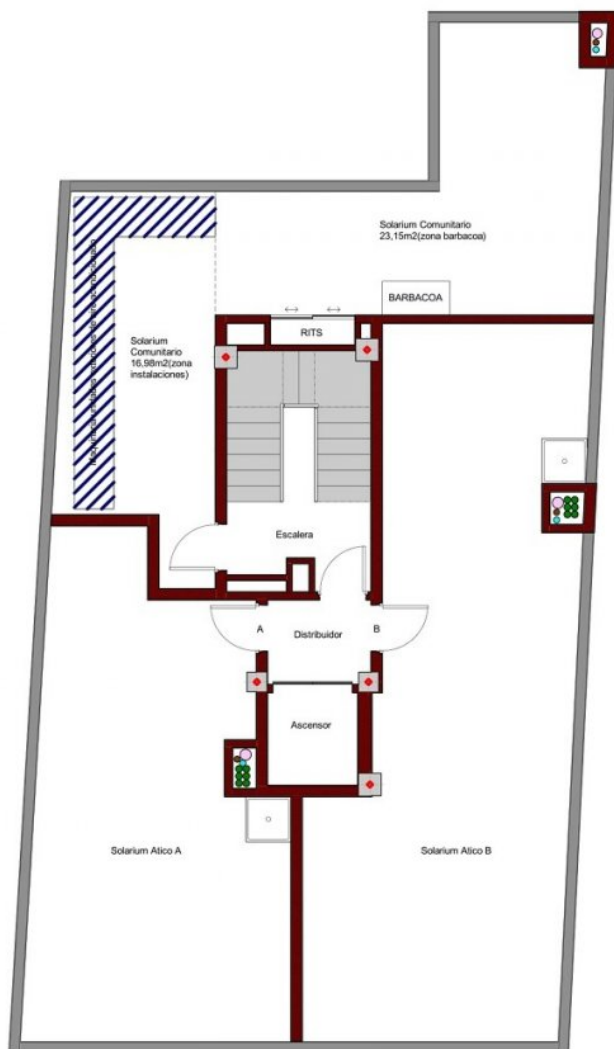
PLANTA BAJA



PLANTA TIPO



PLANTA ATICO



PLANTA CUBERTA







"Experience our experience - Because you deserve the best"