



REF: # 9944

()



#### INFO

**PRICE:** 239.000 €

**PROPERTY TYPE:** Apartment (Penthouse)

**LOCATION:** ()

**BEDROOMS:** 2

**Bathrooms:** 2

**Build:** 74 (m2)

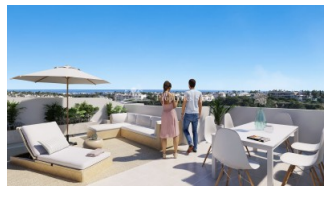
**Plot:** -

**Terrace:** 56 (m2)

**Year:**

**Floor:** -

**Old price** -



#### DESCRIPTION

FANTASTIC COMPLEX RESIDENTIAL OF NEW BUILD APARTMENTS PENTHOUSE IN VILLAMARTIN ORIHUELA COSTA with communal pool. This 74m2 penthouse apartment consists of 2 bedrooms, 2 bathrooms, an open plan kitchen with living room, a 11,90 m2 private terrace and a 43,60m2 solarium. The communal areas are approximately 3.300 m2 and have WIFI, 2 swimming pools, a Jacuzzi and 2 Petanque courts. This residential consists of 94 apartments and is located in Las Filipinas which is in the area of Villamartin Golf on the Orihuela Costa and has been designed to meet the needs of those looking for a Mediterranean lifestyle in a quiet but well established area close to the sea and all amenities. Villamartin was built around one of the most prestigious golf courses on the Costa Blanca "Villamartin Golf Club" and is home to a cosmopolitan and International with one of the healthiest climates in the world. Just a short distance away you can find four other golf courses such as Las Ramblas, Campoamor, Las Colinas and La Finca. It is also home to some of the best blue flag beaches in the region like La Zenia, Cabo Roig and Campoamor only 5km drive away. The area offers such a wide range of services including weekly markets, the renowned high standard international school "El Limonar" and the famous "La Zenia Boulevard" centre, the largest of its kind in southern Spain! Situated close to many commercial centres including the well know Villamartin Plaza and La Fuente Centre along with many restaurants, fashion shops, supermarkets, banks, pharmacies and much more that you really are spoilt for choice. The area is not just a golfer's paradise you can find a large range of activities and entertainment for all the family to enjoy, so, whether you are looking for a holiday home, a Golf property or a

permanent residence, this development offers everything you could possibly need! The complex is located only 40 minutes from Alicante Airport and 1 hour from Murcia (Corvera) Airport.

| STYLE  | VIEWS   | DISTANCE TO :   | PARKING            |
|--|---|---|--------------------|
| <ul style="list-style-type: none"><li>Modern</li></ul>       | <ul style="list-style-type: none"><li>Panoramic views</li></ul>                         | Beach : 5 Km<br>Airport: 70 Km  | Parking no Cars: 1 |
| KITCHEN  | GARDEN AND TERRACES   | EXTRA   |                    |
| <ul style="list-style-type: none"><li>Open kitchen</li></ul> | <ul style="list-style-type: none"><li>Covered terrace</li><li>Communal Garden</li></ul> | <ul style="list-style-type: none"><li>Outdoor jacuzzi</li><li>Built in wardrobes</li><li>Reinforced door</li><li>Lift</li></ul> |                    |



## PROPERTY GALLERY





























|    |                     |                  |                  |     |                                |                                   |                              |
|----|---------------------|------------------|------------------|-----|--------------------------------|-----------------------------------|------------------------------|
| 12 | Piscina adults      | Adult pool       | Piscina adults   | 79  | Buñuelos                       | Mallowes                          | Berles aux lettres           |
| 65 | Piscina infantil    | Children pool    | Piscina infantil | 81  | Salle d'apparements            | Parking rail                      | Sortie parking               |
| 66 | Entrada peatonal    | Entrance         | Entrée           | 85  | Accès peatonal à l'apparements | Passerelles access to the carpark | Passerelles pour les piétons |
| 67 | Entrada aparcarista | Parking entrance | Entrée parking   | 90  | Douches                        | Showers                           | Douche                       |
| 74 | Jacuzzi             | Jacuzzi          | Jacuzzi          | 114 | Juegos peñales                 | Games penance                     | Jeux pénitence               |
| 76 | Aparcamiento bici   | Bike parking     | Parking a vélos  | 121 | Centro de transformación       | Distribution substation           | Transformateur               |

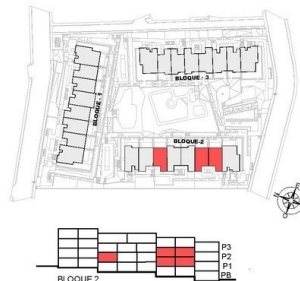
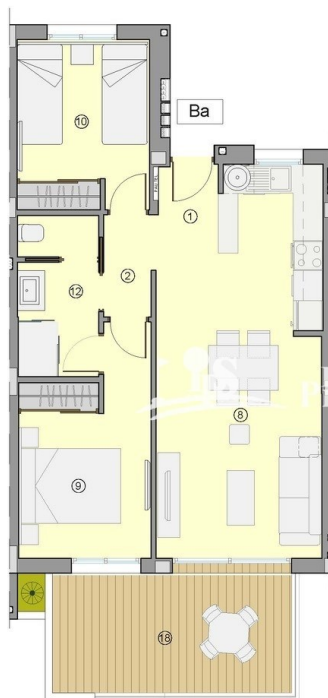


PLANTA GENERAL DE URBANIZACIÓN  
GENERAL PLAN OF URBANIZATION  
PLAN GÉNÉRAL D'URBANISATION

0 2 4 6 8 10m

PLANTA SUJETA A POSIBLES MODIFICACIONES POR RAZONES O EXIGENCIAS DE ORDEN TÉCNICO O JURÍDICO. LAS SUPERFICIES SON APROXIMATIVAS.  
Plans subject to possible modifications for technical or legal reasons. Measurements shown are approximate.  
Plan soumis à modifications en fonction des besoins ou exigences d'ordre technique ou juridique. Les surfaces sont approximatives.

DICIEMBRE / DECEMBER / DÉCEMBRE 2021



| nº  | SUPERFICIES ÚTILES / FLOOR AREA / SURFACES UTILES   | TIPO / TYPE / TYPE |
|---|---|--------------------|
| 1   | VESTIBULO / HALL / ENTRÉE   | Ba                 |
| 2   | DISTRIBUIDOR / CORRIDOR / CIRCULATION   |                    |
| 8   | SALON-COMEDOR-COCINA / LIVING-DINING ROOM- KITCHEN /<br>SALON-SALLE A MANGER- CUISINE               |                    |
| 9   | DORMITORIO 1 / BEDROOM 1 / CHAMBRE 1  |                    |
| 10  | DORMITORIO 2 / BEDROOM 2 / CHAMBRE 2  |                    |
| 12  | BAÑO 1 / BATHROOM 1 / SALLE DE BAINS 1  |                    |
| TOTAL SUP. ÚTILES / TOTAL FLOOR AREA / TOTAL SURFACES UTILES                                  |   | 53,28 m²           |
| SUP. CONSTRUIDA INTERIOR / BUILT INTERIOR AREA / SURFACE CONSTRUITE IN TÉRIEUR                |   | 62,80 m²           |
| 18  | SUP. CONSTRUIDA TERRAZA CUBIERTA 1 / BUILT COVERED 1 AREA /<br>SURFACE CONSTRUITE TERRASSE COUVERTE | 13,51 m²           |
| TOTAL SUP. CONSTRUIDA PRIVADA / TOTAL BUILT PRIVATE AREA / TOTAL SURFACE CONSTRUITE PRIVATIVE |   | 76,31 m²           |

TIPO/TYPE/TYPER Ba

MARZO / MARCH / MARS 2022

TIPO Ba: APARTAMENTO. 2 DORMITORIOS + 1 BAÑO. PLANTA 1 Y 2.  
TYPE Ba: APARTMENT. 2 BEDROOMS + 1 BATHROOM. FIRST AND SECOND FLOOR.  
TYPE Ba: APPARTEMENT. 2 CHAMBRES + 1 BAIN. PREMIER ET DEUXIÈME ÉTAGE.

0 1 m 3 m 5 m

Plano sujeto a posibles modificaciones por razones o exigencias de índole técnica o jurídica. Las superficies son aproximativas. Cocina y amueblamiento orientativo, sin valor contractual.  
Plans subject to possible modifications for technical or legal reasons. Measurements shown are approximate. Kitchen and furnishings are for display purposes only, with no contractual value.  
Plan soumis à modifications en fonction des besoins ou exigences d'ordre technique ou juridique. Les surfaces sont approximatives. Cuisine et aménagement indicatifs, sans valeur contractuelle.









*"Experience our experience - Because you deserve the best"*